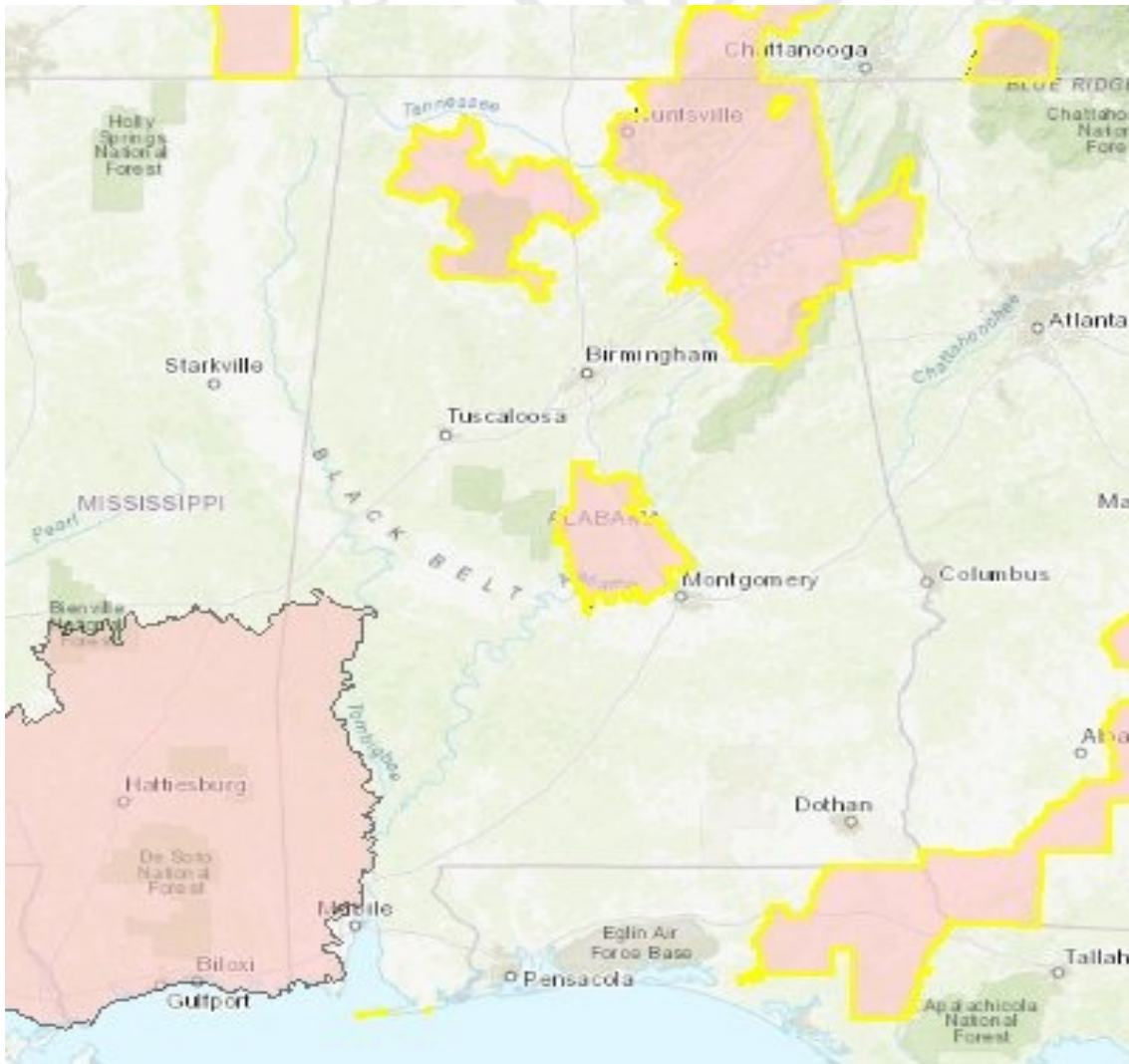


Endangered Species Protection Bulletin



Valid For: December 2018

- 1 Areas where pesticide use must be limited are identified on the map. A legend is located below the map to help pinpoint these locations.



 Limitation Area

- 2 Look below at the Pesticide Use Limitation Summary Table. This table lists the user selected Active Ingredient(s) (AIs) or Product(s) with pesticide use limitations on the printed map. Locate the Active Ingredient (AI) or Product you intend to apply in this table and identify the code in the last column. This code indicates the specific limitation associated with that AI or Product. A limitation description for each code can be found below in the Codes and Limitations Table. If multiple Pesticide Use Limitation Areas (PULAs) are visible on the map, these tables provide information for the highlighted PULA.

If you are applying a pesticide that contains more than one Active Ingredient, or multiple Products, then multiple codes may apply. Follow the limitations for all codes when using this pesticide.

Pesticide Use Limitation Summary Table

AI/Product	Use	App Method	Formulation	Code
DUPONT FEXAPAN HERBICIDE [352-913]	Soybean	Ground spray	Liquid	D1
M1768 HERBICIDE [524-617]	Soybean	Ground spray	Liquid	D1
Diglycolamine salt of dicamba (3,6-dichloro-o-anisic acid)	Soybean	Ground spray	Liquid	D1
M1768 HERBICIDE [524-617]	Cotton	Ground spray	Liquid	D1
DUPONT FEXAPAN HERBICIDE [352-913]	Cotton	Ground spray	Liquid	D1
Diglycolamine salt of dicamba (3,6-dichloro-o-anisic acid)	Cotton	Ground spray	Liquid	D1
BAPMA salt of Dicamba	Cotton	Ground spray	Liquid	D1
ENGENIA HERBICIDE [7969-345]	Cotton	Ground spray	Liquid	D1
BAPMA salt of Dicamba	Soybean	Ground spray	Liquid	D1
ENGENIA HERBICIDE [7969-345]	Soybean	Ground spray	Liquid	D1

Codes and Limitations Table

Code	Limitation
D1	In combination with the 110 foot in-field wind-directional spray drift buffer, a 57 foot omnidirectional infield buffer is required to protect federally listed threatened and endangered species. Non-sensitive areas, defined below, may be included as part of the buffer. Non-sensitive areas: The following areas may be included in the buffer distance calculation when directly adjacent to the treated field edges: 1. Roads, paved or gravel surfaces, mowed and/or managed areas adjacent to field such as rights of way. 2. Planted agricultural fields containing: corn, cotton, and soybeans. 3. Areas covered by the footprint of a building, silo, or other man made structure with walls and or roof.