

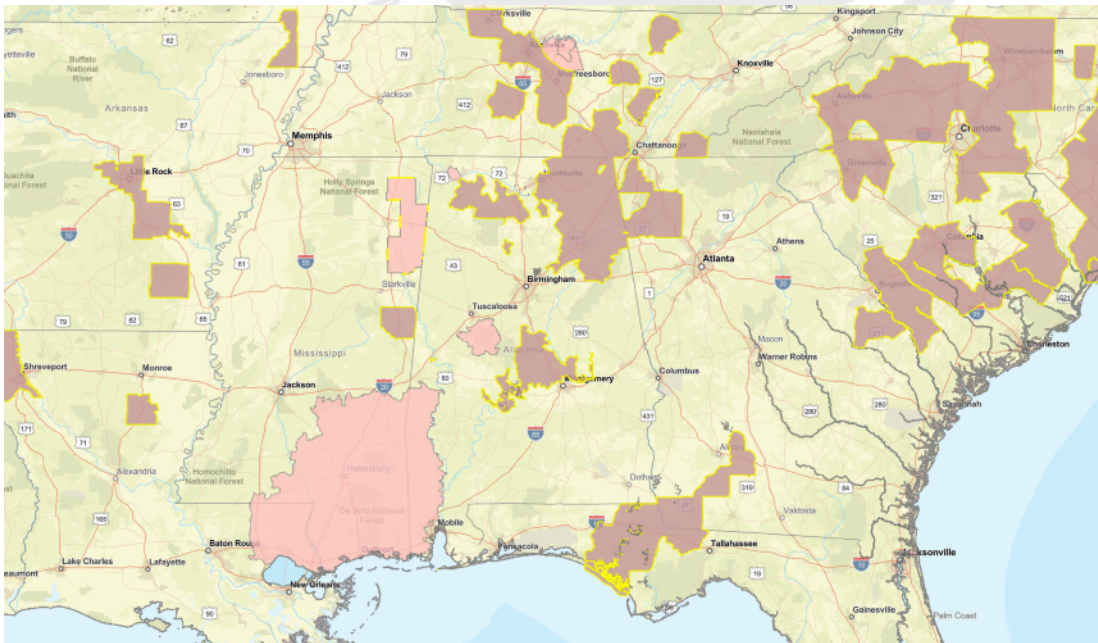
# Endangered Species Protection Bulletin



**Application Month:** April 2024

**Product:** All products with limitations in selected area

- 1 Areas where pesticide use must be limited are identified on the map. A legend is located beside the map to help pinpoint these locations.



## Legend

 Limitation Area

- 2 Look below at the Pesticide Use Limitation Summary Table. This table lists the user selected Active Ingredient(s) (ALs) or Product(s) with pesticide use limitations on the printed map. Locate the Active Ingredient (AI) or Product you intend to apply in this table and identify the code in the last column. This code indicates the specific limitation associated with that AI or Product. A limitation description for each code can be found below in the Codes and Limitations Table. If multiple Pesticide Use Limitation Areas (PULAs) are visible on the map, these tables provide information for the highlighted PULA.

If you are applying a pesticide that contains more than one Active Ingredient, or multiple Products, then multiple codes may apply. Follow the limitations for all codes when using this pesticide.

# Endangered Species Protection Bulletin

## Pesticide Use Limitation Summary Table

| Product   | AI                          | Use                      | Method       | Form   | Code |
|---|-----------------------------|--------------------------|--------------|--------|------|
| A21472 PLUS VAPORGRIP TECHNOLOGY (100-1623) Alternate: TAVIUM PLUS VAPORGRIP TECHNOLOGY | Dicamba, diglycolamine salt | Dicamba-Tolerant Cotton  | Ground spray | Liquid | D120 |
| A21472 PLUS VAPORGRIP TECHNOLOGY (100-1623) Alternate: TAVIUM PLUS VAPORGRIP TECHNOLOGY | Dicamba, diglycolamine salt | Dicamba-Tolerant Soybean | Ground spray | Liquid | D120 |
| ENGENIA HERBICIDE (7969-472)  | Dicamba                     | Dicamba-Tolerant Cotton  | Ground spray | Liquid | D120 |
| ENGENIA HERBICIDE (7969-472)  | Dicamba                     | Dicamba-Tolerant Soybean | Ground spray | Liquid | D120 |
| FEXAPAN PLUS VAPORGRIP TECHNOLOGY (352-938)   | Dicamba, diglycolamine salt | Dicamba-Tolerant Cotton  | Ground spray | Liquid | D120 |
| FEXAPAN PLUS VAPORGRIP TECHNOLOGY (352-938)   | Dicamba, diglycolamine salt | Dicamba-Tolerant Soybean | Ground spray | Liquid | D120 |
| TAVIUM PLUS VAPORGRIP TECHNOLOGY (100-1623) Alternate: TAVIUM PLUS VAPORGRIP TECHNOLOGY | Dicamba, diglycolamine salt | Dicamba-Tolerant Cotton  | Ground spray | Liquid | D120 |

This document contains legal requirements for the use of certain pesticides. Do not modify any text, graphics or coloration or otherwise alter this document. ESPP Contact: ESPP@epa.gov Phone: 1-844-447-3813

# Endangered Species Protection Bulletin

|   |                             |                          |              |        |      |
|---|-----------------------------|--------------------------|--------------|--------|------|
| TAVIUM PLUS VAPORGRIP TECHNOLOGY (100-1623) Alternate: TAVIUM PLUS VAPORGRIP TECHNOLOGY | Dicamba, diglycolamine salt | Dicamba-Tolerant Soybean | Ground spray | Liquid | D120 |
| XTENDIMAX WITH VAPORGRIP TECHNOLOGY (264-1210) Alternate: M1768 Herbicide               | Dicamba, diglycolamine salt | Dicamba-Tolerant Soybean | Ground spray | Liquid | D120 |
| XTENDIMAX WITH VAPORGRIP TECHNOLOGY (264-1210) Alternate: M1768 Herbicide               | Dicamba, diglycolamine salt | Dicamba-Tolerant Cotton  | Ground spray | Liquid | D120 |

## Codes and Limitations Table

| Code | Limitation   |
|------|--|
| D120 | To protect federally listed threatened and endangered species, both a 310-foot in-field wind-directional spray drift buffer and a 57-foot omnidirectional in-field buffer are required. If applying to dicamba-tolerant soybeans with a qualified hooded sprayer, both a 240-foot in-field wind-directional spray drift buffer and a 57-foot omnidirectional in-field buffer are required to protect federally listed threatened and endangered species. Please see the label for a link to the website(s) with your product's qualified hooded sprayers. The following areas may be included in the buffer distance composition when directly adjacent to the treated field edges: 1. Roads, paved or gravel surfaces, mowed grassy areas adjacent to field, and areas of bare ground from recent plowing or grading that are contiguous with the treated field. 2. Planted agricultural fields containing dicamba-resistant plantings of cotton and soybeans. 3. Areas covered by the footprint of a building, silo, or other man made structure with walls and or roof. |