

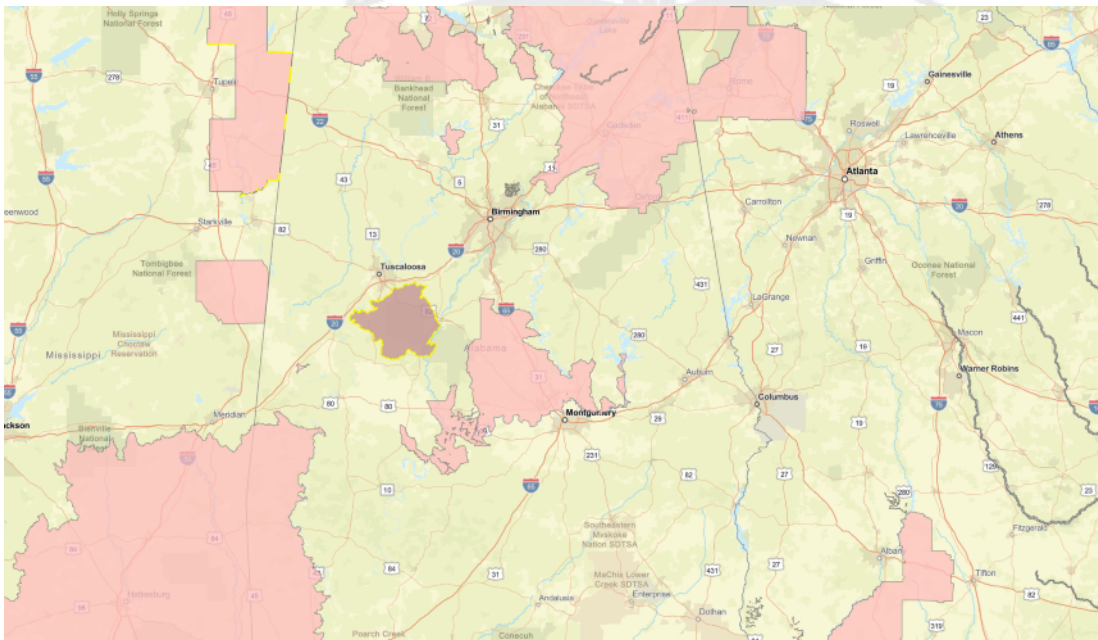
Endangered Species Protection Bulletin



Application Month: December 2025

Product: All products with limitations in selected area

- 1 Areas where pesticide use must be limited are identified on the map. A legend is located beside the map to help pinpoint these locations.



Legend

 Limitation Area

- 2 Look below at the Pesticide Use Limitation Summary Table. This table lists the user selected Active Ingredient(s) (AIs) or Product(s) with pesticide use limitations on the printed map. Locate the Active Ingredient (AI) or Product you intend to apply in this table and identify the code in the last column. This code indicates the specific limitation associated with that AI or Product. A limitation description for each code can be found below in the Codes and Limitations Table. If multiple Pesticide Use Limitation Areas (PULAs) are visible on the map, these tables provide information for the highlighted PULA.

If you are applying a pesticide that contains more than one Active Ingredient, or multiple Products, then multiple codes may apply. Follow the limitations for all codes when using this pesticide.

Endangered Species Protection Bulletin

Pesticide Use Limitation Summary Table

Product	AI	Use	Method	Form	Code	Last Update
BENEVIA insect control (279-9614) Inactive: DUPONT BENEVIA insect control	Cyantraniliprole	All Agricultural Uses	Aerial spray	Emulsifiable Concentrate	CYN23	9/28/2023
EXIREL INSECT CONTROL (279-9615) Inactive: DUPONT EXIREL insect control	Cyantraniliprole	All Agricultural Uses	Aerial spray	Emulsifiable Concentrate	CYN23	9/28/2023
Mainspring Flora (100-1585)	Cyantraniliprole	All Agricultural Uses	Aerial spray	Granular	CYN23	9/28/2023
MAINSRING GNL (100-1543) Alternate: MAINSPRING GH & N Inactive: HGW86 GH & N INSECT CONTROL	Cyantraniliprole	All Agricultural Uses	Aerial spray	Emulsifiable Concentrate	CYN23	9/28/2023
MAINSRING GNL (100-1543) Alternate: MAINSPRING GH & N Inactive: HGW86 GH & N INSECT CONTROL	Cyantraniliprole	All non-agricultural uses	Aerial spray	Emulsifiable Concentrate	CYN23	9/28/2023
MAINSRING GNL (100-1543) Alternate: MAINSPRING GH & N Inactive: HGW86 GH & N INSECT CONTROL	Cyantraniliprole	Christmas Tree Plantations	Aerial spray	Emulsifiable Concentrate	CYN23	9/28/2023
MINECTO DUO INSECTICIDE (100-1421) Inactive: MINECTO DUO INSECTICIDE, A16901B CP	Cyantraniliprole	All Agricultural Uses	Aerial spray	Granular	CYN23	9/28/2023

Endangered Species Protection Bulletin

Minecto Pro (100-1592)	Cyantraniliprole	All Agricultural Uses	Aerial spray	Emulsifiable Concentrate	CYN23	9/28/2023
---------------------------	------------------	-----------------------------	--------------	-----------------------------	-------	-----------

Codes and Limitations Table

Code	Limitation
CYN23	For aerial applications using medium to coarse droplet sizes, a 75 foot in-field, wind-directional buffer for windspeeds ≤ 10 mph or a 100 foot in-field, wind-directional buffer for windspeeds 11-15 mph are required. For aerial applications using coarse to very coarse droplet sizes, a 40 foot in-field, wind-directional buffer for windspeeds ≤ 10 mph or a 50 foot in-field, wind-directional buffer for windspeeds 11-15 mph are required. The applicator must maintain the appropriate in-field, wind-directional buffer as described above from treatment sites to any area except the following: 1) Roads, paved or gravel surfaces, 2) planted agricultural fields, 3) agricultural fields that have been prepared for planting, or 4) areas covered by the footprint of a building, shade house, silo, feed crib, or other man-made structure with walls and/or a roof. In-field, wind directional buffers can be maintained at half the distance required above when windbreaks (e.g., trees or riparian hedgerows) between the application site and all areas except those listed above are present. The windbreak would need to have a row of broad-leaved trees the full length of the treated crop with leaves visible over the entire length, with no significant gaps. The height of the trees or windbreak would need to be at a height greater than the crop to be sprayed.