



ALABAMA

Farmers and Consumers' Bulletin

Volume 68, Issue 9 www.ALFarmBulletin.com September 2020



From the Desk of Rick Pate, Commissioner

There's no doubt this has been a crazy year so far. We've certainly faced some unique challenges caused by COVID-19, but we hope you know that we are always here to serve you and do our part.

At the end of July, an unexpected issue came to our attention. Several Alabama residents let us know they received "unsolicited" China origin seeds delivered to their home.

Our staff really went above and beyond to investigate this situation. Within a day, an online reporting system was setup and inspectors were out collecting packages from citizens. It was important to quickly identify the seeds and be sure they were not noxious weed seed or invasive species. We also wanted to be sure they didn't contain any unknown compounds. Testing results and instructions on what to do if you receive a package of seeds, can be found on page 8.

I mentioned last month that the Alabama Legislature approved Governor Kay Ivey's plan for spending the \$1.9 billion of *Coronavirus Aid, Relief, and Economic Security (CARES) Act* money sent to Alabama from the federal government. On August 12, Gov. Ivey announced that \$26 million would be used to create the Alabama Agricultural Stabilization Program (AASP). Our department will administer the AASP. Details on who is eligible and how to apply can be found in the article on the front page of this issue.

An event we are most proud to have been a part of this past month is the Sweet Grown Alabama farmers market held in front of the state capitol. The event celebrated Gov. Ivey's declaration of July 22, 2020, as *Sweet Grown Alabama Day*.

The Department of Agriculture and Industries and other stakeholders realized consumers were looking for local foods. The Sweet Grown Alabama brand is your assurance that you are buying nutritious, safe food from your Alabama neighborhood farms. A new searchable database where consumers can find local farms in their area is available at www.sweetgrownalabama.org. More details about the Sweet Grown Alabama program and the special farmers market can be found in the article on page 4.

As you can see, it has been another busy month for us. We are ready to help address any new challenges faced by farmers and consumers in Alabama. I hope you and your family stay well and that we all get to enjoy some college football this fall.

Alabama Agricultural Stabilization Program (AASP)

Gov. Kay Ivey has awarded \$26 Million of CARES Act Funds to assist Alabama Agriculture impacted by COVID-19. Funding will be used to establish the Alabama Agricultural Stabilization Program (AASP).

"Agriculture has an economic impact of over \$70 billion in the state of Alabama. I know firsthand how hard our farmers work each day, and they are without a doubt a major part of who we are in Alabama," Governor Ivey said. "Due to COVID-19, numerous farms and processing facilities have struggled to remain open and sell their products. Establishing the Alabama Agricultural Stabilization Program is not only the right thing to do to protect our farmers, but it also key to stabilizing Alabama's economy."

The AASP will be administered through the Alabama Department of Agriculture and Industries (ADAI). No funds may be utilized for salaries, building projects, or capital improvements.



www.ALFarmBulletin.com

In this Issue ...

Chef Spooner	8
Classifieds	12
Commissioner's Desk	1
Employee Spotlight	7
Hay Report	3
Hog Report	7
Livestock Summary	3
Product Spotlight	7
Subscription/Advertising	9
Upcoming Events	10

Feature Articles ...

AL Ag Stabilization Prog	1
AL Fair Schedule	6
AL Heritage Park Pavilion	6
China Seed Packages	8
Pine Beetle Predictions	5
Preserving Fresh Eggs	10
Sweet Grown AL Day	4

Agricultural Innovations ...

Anti-Mosquito Material	11
Farm Waste-water	11

"I want to thank Governor Ivey for her continued support of Alabama agriculture and for providing much needed assistance to farmers and processors adversely affected by COVID-19," Rick Pate, ADAI Commissioner said. "Because of these men and women, our food supply chain is safe, abundant and sustainable. This program was a collaborative effort between our department and the Alabama Cattlemen's Association, Alabama Farmers Federation, Alabama Poultry & Egg Association, Alabama Agribusiness Council, and other agriculture stakeholders."

A summary of each of the seven programs is available on the following page.

continued on pg 2 ...

1. Direct Payment Business Stabilization Grants to Cattle Producers – \$10.5 million for feeder and fed cattle sold between April 16, 2020 and May 15, 2020, and dairy producers that qualified for USDA’s Coronavirus Food Assistance Program (CFAP).

2. Meat Processing Plant Reimbursement Program – \$1.5 million for reimbursements of up to \$50,000 for existing processors to expand capacity to meet increased demand caused by COVID-19. To be eligible, an applicant must be a T/A, State, or Custom Exempt plant that slaughters and processes and is currently inspected by ADAI.

3. Poultry Farmer Stabilization Grant Program – \$4 million to assist poultry farmers that have experienced an extended downtime (longer than 21 days) between flocks and have not been otherwise compensated.

4. Catfish Processor Reimbursement Program – \$500,000 to reimburse catfish processing plants for purchases of PPE, disinfectants, workstation dividers, COVID-19 testing for employees, etc. to combat COVID-19 made between March 13, 2020 and July 31, 2020.

5. Fruit & Vegetable Processor Reimbursement Program – \$500,000 to reimburse fruit and vegetable processing plants for purchases of PPE, disinfectants, workstation dividers, COVID-19 testing for employees, etc. to combat COVID-19 made between March 13, 2020 and July 31, 2020. Funds may also be used to reimburse the processors for the purchase of equipment such as washing stations, flash freezers, and packaging equipment to expand production to meet increased demand caused by COVID-19.

6. State Supplemental CFAP Grant Program – \$8 million for a state supplemental payment to producers that qualified for USDA’s Coronavirus Food Assistance Program (CFAP). The exact percentage to be used for the state payment will be determined after all state supplemental CFAP applications have been received and USDA’s CFAP data is finalized.

7. Nursery Grower Reimbursement Program – \$1 million to reimburse licensed nursery growers for purchases of PPE, disinfectants, workstation dividers, COVID-19 testing for employees, etc. to combat COVID-19 made between March 13, 2020 and July 31, 2020. This program will not apply for nursery growers that are compensated through the State Supplemental CFAP Program for their nursery losses.

Preliminary application information is available in the chart below.

Type:	Amount:	Applications Available:	Applications Deadline:	How to Apply:
Meat Processors	\$1.5 M	Aug 24	Sept 15	Contact: Lynn.Blue@agi.alabama.gov
Catfish Processors	\$500,000	Aug 24	Sept 15	Contact: Patrick.Moody@agi.alabama.gov
Fruit & Vegetable Processors	\$500,000	Aug 24	Sept 15	Contact: Don.Wambles@agi.alabama.gov
Cattle Producers	\$10.5 M	Sept 8	Oct 9	Available on-line Sept. 8 at www.agi.alabama.gov
Nursery Growers	\$1.0 M	Sept 15	Oct 15	Available on-line Sept. 15 at www.agi.alabama.gov
State CFAP Supplemental Program	\$8.0 M	Sept 15	Oct 15	Available on-line Sept. 15 at www.agi.alabama.gov
Poultry Farmers	\$4.0 M	Oct 1	Oct 31	Available on-line Oct. 1 at www.agi.alabama.gov

(subject to change)

Please refer to www.agi.alabama.gov for sign-up details.



THE ALABAMA Gazette
HOME DELIVERY!!
Never miss an issue with home delivery! Cost covers S&H along with full online access to all the issues at www.alabamagazette.com.

20 years of printing the People’s Paper with God, Family & Country taking front and center. Renowned writers bring the latest commentary on federal, state and local news.

The Alabama Gazette is FREE and can be picked up at locations around the River Region.

THE ALABAMA GAZETTE HOME DELIVERY FORM

Send My S&H/Home Delivery to: Name: _____ Address: _____ City: _____ State: _____ Zip: _____ Cell: (____) _____ E-mail: _____

Send a Gift S&H/Home Delivery to: Name: _____ Address: _____ City: _____ State: _____ Zip: _____ Cell: (____) _____ E-mail: _____

My check for \$35 for ONE 12-Month S&H/Home Delivery is enclosed.

My check for \$70 for TWO 12-Month S&H/Home Deliveries is enclosed.

Complete this form and return to:
The Alabama Gazette, 12 E. Jefferson Street, Montgomery, AL 36104

START MONTH



WE ARE ALL COUNTING ON YOU.
THE 2020 CENSUS IS HERE.
MY2020CENSUS.GOV

Cover Image: *September is National Honey Month along with National Chicken Month.*

Alabama Farmers and Consumers’ Bulletin (ISSN 1055-954X) (USPS 011-380) is published monthly by the State Department of Agriculture and Industries, 1445 Federal Dr., Montgomery, AL 36107. An \$18.00 annual subscription fee is charged to Alabama residents and a \$22.00 fee is charged to non-residents. Periodicals postage paid in Montgomery, AL. POSTMASTER: Send address changes to AFCB, P.O. Box 3336, Montgomery, AL 36109-0336. Phone 334/356-6700, Fax 334/240-7169.

Email: info@ALFarmBulletin.com; or Website: www.ALFarmBulletin.com

RICK PATE, Commissioner

The Department of Agriculture and Industries (ADAI) does not assume any responsibility for the transactions effected through the columns of the Bulletin. Those persons who offer items for sale are expected to fulfill the terms of their offer. Failure through either negligence or intention may require the Bulletin to refuse publishing future ads.

Published by **The Alabama Gazette Publishing, LLC (AGP)**

Loretta Grant & Sam Adams, Owners & Publishers
12 East Jefferson Street, Montgomery, AL 36104

Amy Belcher ADAI Editor	Chelese Beck AGP Project Mngr., Contr. Editor	Laura Jean McCurdy ADAI Contributing Editor	Tobias Grant Alento, LLC Circulation Mngr.
--------------------------------------	--	--	---

Alabama Livestock Summary

Cattle & calves at reported markets throughout the state for August totaled an estimated 42,000 head compared to 45,988 head for July and 52,507 head for August 2019. Compared to last period: Slaughter cows steady to \$2 higher, slaughter bulls sold steady to \$3 lower. Feeder steers and heifers sold mostly \$3-6 higher. Replacement cows sold steady at \$100 higher. The feeder supply included 31% steers, 42% heifers, and 27% bulls.

Wt Range	Avg Wt	Price Range	Avg Price	
Cows Breaker 75-80%				
1100-1790	1454	53.00-68.00	60.74	Average
1210-1850	1429	57.00-75.00	67.32	High
1090-1770	1409	50.00-62.00	55.75	Low
Cows Boner 80-85%				
810-1635	1183	51.00-70.00	62.42	Average
1000-1610	1278	61.00-77.00	68.98	High
915-1610	1180	50.00-63.00	56.46	Low
Cows Lean 85-90%				
800-1265	1034	44.00-63.00	55.76	Average
820-1225	1050	54.00-69.00	62.51	High
765-1310	953	42.00-59.00	50.81	Low
Bulls Y.G. 1-2				
1120-2210	1694	81.00-95.00	87.93	Average
1325-2210	1830	89.00-101.00	94.81	High
1000-2155	1500	73.00-91.00	80.97	Low

Steers Medium and Large 1				
255-295	271	175.00-185.00	180.25	
300-345	327	164.00-187.00	172.33	
350-395	371	158.00-171.00	166.79	
405-440	421	135.00-168.00	155.00	
455-485	471	130.00-160.00	143.34	
500-549	526	125.00-153.00	140.26	
550-596	577	122.00-151.00	133.10	
600-645	627	118.00-140.00	131.74	
650-697	677	116.00-135.00	125.60	
700-745	724	116.00-130.00	123.28	
750-795	773	113.00-129.00	120.74	
802-830	808	113.00-125.00	120.42	
850-875	867	110.00-112.00	110.65	

Steers Medium and Large 2				
255-295	282	160.00-177.00	170.13	
305-345	327	150.00-177.00	161.01	
355-395	376	145.00-165.00	157.29	
405-446	430	138.00-158.00	145.15	
455-495	478	130.00-155.00	141.04	
500-545	531	118.00-146.00	135.60	
552-599	575	120.00-139.00	131.18	
601-647	621	111.00-135.00	128.47	
655-695	672	113.00-131.00	123.64	
700-745	715	108.00-128.00	119.75	
755-793	770	110.00-123.00	114.77	

Heifers Medium and Large 1				
275-288	285	150.00-162.00	156.39	
305-345	330	128.00-150.00	142.16	
355-395	372	123.00-152.00	139.25	
400-448	421	120.00-145.00	132.57	
450-495	472	119.00-137.00	127.66	
500-545	523	116.00-132.00	123.25	
550-595	573	113.00-130.00	120.12	
600-649	628	108.00-128.00	117.83	
650-695	668	105.00-121.00	113.12	
700-745	720	98.00-118.00	107.96	
752-795	775	94.00-115.00	106.27	
802-825	806	97.00-107.00	105.08	

Wt Range	Avg Wt	Price Range	Avg Price
Heifers Medium and Large 2			
205-242	230	140.00-150.00	143.80
260-295	283	135.00-147.00	139.57
305-345	329	118.00-145.00	136.73
350-395	375	117.00-147.00	132.59
400-447	428	113.00-137.00	127.10
450-499	476	109.00-131.00	121.96
500-545	527	108.00-129.00	121.04
550-595	575	104.00-125.00	116.16
600-645	624	105.00-119.00	112.15
655-695	671	100.00-117.00	107.65
705-745	732	97.00-109.00	102.36
765-790	776	91.00-98.00	95.31

Livestock/Hay Sources: *USDA-AL Dept of Ag Market News Service, Montgomery, AL, David Garcia, OIC/Office 334-223-7488. For more information contact: Montgomery.lpgmn@ams.usda.gov*



Photo courtesy of USDA.gov.

Alabama Hay for Sale:
agi.alabama.gov/s/haylist

To list hay, contact:

Hassey Brooks

HayList@agi.alabama.gov

Phone: (334) 240-3877

Fax: (334) 240-7190



Photo courtesy of USDA.gov.

Alabama Monthly Hay Report

Compared to last month: Hay prices were steady for the month of August. Trade moderate with moderate supply and good demand. All prices are FOB unless otherwise noted.

Estimated Tons: 1,500 Last Month: 1,305 Last Year: 1,840

Southeast Hay:	Tons	Price Range	Wtd Avg
Bahia Grass - Good			
Medium Round	35	100	100
Small Square	7.5	200	200
Bahia Grass - Fair			
Small Square	5	180	180
Bermuda Grass - Premium			
Large Round	33	133.33	133.33
Medium Round	112	90.00-130.00	107.48
Small Square	208.5	180.00-300.00	218.65
Bermuda Grass - Good			
Medium Round	108	80	80
Mixed Grass - Good			
Medium Round	68	70	70

Sweet Grown Alabama Day

Alabamians who want to support local farmers and buy locally grown products can now easily find what they're looking for thanks to the launch of **Sweet Grown Alabama's** online searchable database.

That sweet success was celebrated at the Capitol with a special farmers market and **Gov. Kay Ivey** issuing a proclamation that declared July 22, 2020, Sweet Grown Alabama Day.

Nearly 30 vendors and Sweet Grown Alabama members joined the celebration with a farmers market on Bainbridge Street. They sold produce, meat, honey, pecans and other locally produced items.

"Alabama's farmers have a significant impact on our great state with over 580,000 Alabamians working in agriculture and related industries," said Gov. Kay Ivey. "Connecting with local farmers through Sweet Grown Alabama is a great opportunity to show your support for our neighbors and enjoy the wonderful products grown right here at home!"

Originally launched in September 2019, Sweet Grown Alabama's online membership database at SweetGrownAlabama.org has grown to include over 150 farmers and businesses that sell Alabama-grown products directly to consumers.

"More and more consumers are beginning to care about where their food and other products are grown," said Kyle Morris of Mulberry Bend Cattle Farm in Hanceville. "It's great to have a program like Sweet Grown Alabama that helps farmers serve the needs of consumers and allows us to connect with the people purchasing and enjoying our products."

Contributing more than \$70 billion annually, agriculture is a key employer and economic driver in Alabama. However, Sweet Grown Alabama leaders said it had been difficult for consumers to connect directly with local farmers, until now.



Left to right: Horace Horn, Power South; Clara Pappin and Katie Thomas, RC&D; Ellie Watson, Director of Sweet Grown Alabama, Commissioner Pate, ADAI; and Noopie Cosby, President of Cosby Company.

"A program like Sweet Grown Alabama has been a missing link in our state's agriculture industry for many years," said Commissioner of Agriculture and Industries and Sweet Grown Alabama Board Member Rick Pate. "Consumers now have a tool to search for local farms in their area through the online database at SweetGrownAlabama.org, and we guarantee you'll love the high quality, local products you buy from Alabama farms. Buying locally grown is better for the environment, better for Alabama's economy and just plain better quality for consumers."

Alabama U-Pick Locations



Download the 4-page
U-Pick Locations
at this link:

http://www.ALFarmBulletin.com/2020_Upick.pdf



Ellie Watson, Director of Sweet Grown Alabama received the proclamation from Governor Kay Ivey. Pictured behind is Power South's Horace Horn; Alabama Farmers Federation President Jimmy Parnell; Commissioner Pate, ADAI.

Sweet Grown Alabama is a non-profit program, created as a collaborative effort between agricultural groups in the state. Membership is open to farmers as well as markets, restaurants and grocery stores. Those interested in joining can apply for membership at SweetGrownAlabama.org.

Sweet Grown Alabama Director Ellie Watson said the response to the program from the agricultural community has been overwhelmingly positive.

"Not only have we grown our program from zero members to over 150 in less than a year, but we have received generous support from industry groups," said Watson. "The contributions of our nine founding member partners will ensure Sweet Grown Alabama is able to serve the state for years to come, and we are incredibly grateful for their support of Alabama farmers."

Program founding members include the Alabama Association of RC&D Councils, Alabama Ag Credit, the Alabama Department of Agriculture and Industries, the Alabama Farmers Cooperative, the Alabama Farmers Federation, First South Farm Credit, the Poarch Band of Creek Indians, Alabama Farm Credit and PowerSouth Energy Cooperative.

About Sweet Grown Alabama:

Sweet Grown Alabama is a non-profit foundation that enhances marketing opportunities for Alabama farmers by connecting retailers and consumers to Alabama-grown foods and other agricultural products. Farmers, product makers, restaurants, retailers and others are encouraged to join the branding program and use the Sweet Grown Alabama logo on their locally-grown products. To learn more and find locally grown products in your area, visit www.SweetGrownAlabama.org.

USDA's Farm Service
Agency extended the application
period for the Coronavirus Food
Assistance Program (CFAP) to
September 11, 2020.

CFAP provides financial assistance to producers of agricultural commodities who have suffered a 5% or greater price decline or who had losses due to market supply chain disruptions due to COVID-19. To apply or find more information visit www.farmers.gov/cfap



Prediction Low for Pine Beetles in 2020



Southern pine beetle. Photo courtesy *Alabama Forestry Commission*

Good news for forest landowners – Alabama is predicted to have a low number of southern pine beetle (SPB) infestations in 2020, according to the Alabama Forestry Commission (AFC). More specifically, high risk counties are expected to have no more than six to nine SPB spots. The overall prediction for the state is that

Alabama has a 16 percent chance of having any SPB spots this active season.

“Southern pine beetle is one of the most destructive forest pests in the southern and eastern United States,” said Dana Stone, AFC Forest Health Specialist. “They will attack most species of pines, but the most vulnerable are dense, mature stands of loblolly, shortleaf, and/or Virginia pines,” Stone continued. “The location and intensity of SPB outbreaks varies from year to year, and infestations are based on many factors. Condition of the pine stand is one factor. Other contributing factors are extended adverse environmental conditions and SPB population levels.”

Since 2018, an updated analytical model has been used to predict infestation trends more accurately. Each year, a spring SPB pheromone survey is conducted to monitor population levels. Several southeastern states participate in the annual survey, including Alabama. Traps are deployed in several

counties throughout each state, generally from late February to early March, and remain in place from four to six weeks. Baited with a lure – SPB pheromone (frontalin and endo-brevicomin) and a polyethylene blue sleeve (primarily alpha-pinene) – the traps are checked once a week by retrieving the insects from the traps’ collection cups and counting the number of adult southern pine beetles as well as their predators, clerid beetles. After the survey period, the traps are removed from the site. The results of the number of SPBs and clerid beetles caught each week are used to obtain population levels and predict infestation trends for each state.

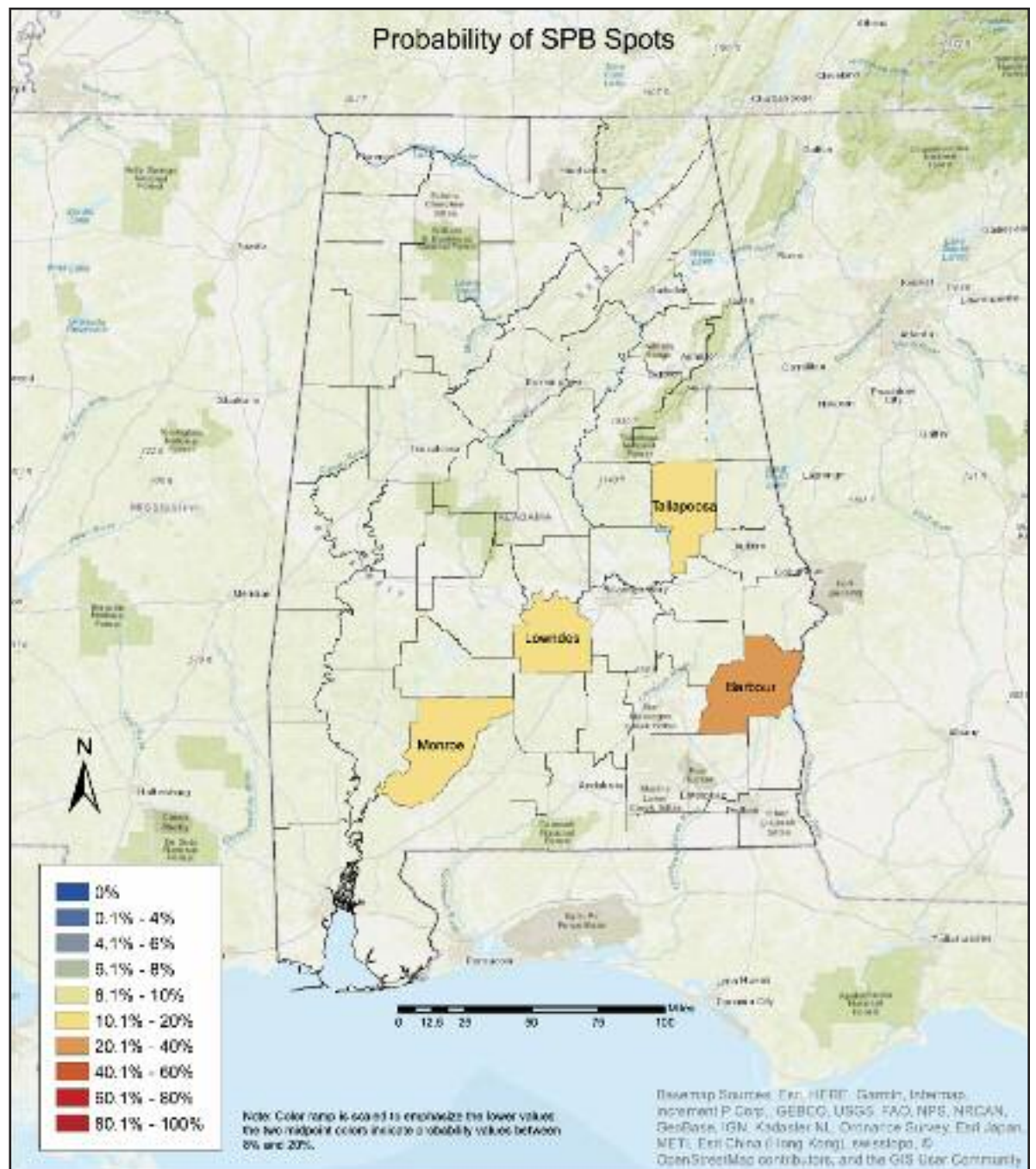
The 2020 survey data was collected and submitted by AFC and other agency employees in Alabama and analyzed by researchers from Bates College, Dartmouth College, and the USDA Forest Service. This analysis does not include data from the National Forests in Alabama, so the final report is not complete. While a preliminary summary was determined for the region, this information is by no means absolute confirmation of what will occur across the state.



Aerial of past Southern pine beetle damage in Alabama forest. Photo courtesy *Alabama Forestry Commission*



Southern pine beetle larvae. Photo courtesy *Alabama Forestry Commission*



Southern Pine Beetle (SPB) Outbreak Prediction Maps: Alabama 2020

The outbreak prediction model is based on a number of predictor variables that were determined to provide the best fit to the data. Most prominent among the driving variables were number of SPB two week time period, and number of spots last year.

The SPB prediction project is supported by USDA Forest Service Science and Technology Development Program (STDP)
 Contact: Matt Ayres - matthew.p.ayres@dartmouth.edu; Carissa Aoki - caoki@bates.edu

Contact: **Elishia Ballentine** at (334) 315-8019
elishia.ballentine@forestry.alabama.gov

Source: **Alabama Forestry Commission**

The mission of the Alabama Forestry Commission is to protect and sustain Alabama’s forest resources using professionally applied stewardship principles and education, ensuring that the state’s forests contribute to abundant timber and wildlife, clean air and water, and a healthy economy.

To learn more about the AFC, visit www.forestry.alabama.gov

2020 Alabama Fair Schedule

Cancelled

- Jackson County
- North Alabama State Fair
- Fayette County Fair
- Pike County Fair

Dates Pending

- Morgan County Fair
- Lawrence County Fair
- Baldwin County Fair

Carnival Only

- Etowah County Fair
- Shelby County Fair
- Butler County Fair
- Cullman County Fair
- Central Alabama Fair
- Covington County Fair

Operational

- Chilton County Fair: Sept. 22 – 26
- DeKalb County Fair: Sept. 28 – Oct. 3
- Alabama National Fair: Oct. 9 – 18
- Autauga County Fair: Oct. 13 – 17
- Calhoun County Fair: Oct. 13 – 17
- National Peanut Festival: Nov. 6 – 15



Photo courtesy of dkul, FreeImages.com

Renovated Pavilion Reflects State's Agricultural Heritage



One of the most easily identifiable buildings along South Donahue Drive in Auburn recently received a major facelift.

The Agricultural Heritage Park Pavilion, located on South Donahue Drive on Auburn University's campus, closed for improvements in December 2019, but is now reopened and redesigned to host events for the region. Events at the pavilion are already underway but subject to safety precautions in light of COVID-19, including a limit to fewer than 50 people and requirement to wear face coverings.

The interior of this focal point on campus—made iconic by its red exterior—reflects the region and state's agricultural heritage, said Paul Patterson, dean of the College of Agriculture and director of the Alabama Agricultural Experiment Station.

"We know that Ag Heritage Park is a destination of choice for many College of Agriculture alumni, friends, faculty and staff and the public—whether they are attending events in the pavilion or the weekly farmers markets in the summer," Patterson said. "We are thrilled to see our mission at Ag Heritage Park continue through the revitalization of this important venue."

Ag Heritage Park is a joint venture of the Auburn University College of Agriculture and the Agricultural Alumni Association located on approximately 30 acres at the southwest corner of Samford Avenue and Donahue Drive. The park pays tribute to Alabama's farmers and agricultural sector while also serving as a gathering place for students, faculty, alumni and friends throughout the year.

The improvements replaced the pavilion's original garage doors with large windows that overlook the park's pond and greenspace, added a floor-to-ceiling, stone-clad electric fireplace, and improved lighting, flooring, furnishings and finishes throughout the venue, according to Misty Glazier, director of business and fiscal administration, who led this project for the College of Agriculture.

As of July 2016, the College of Agriculture and The Hotel at Auburn University and Dixon Conference Center share operation of event venues at Ag Heritage Park, including the pavilion.

"This really is a collaboration across campus units," said Hans van der Reijden, managing director of The Hotel at Auburn University and Dixon Conference Center. "This was the College of Agriculture, the College of Human Sciences' interior design program, the university's Facilities Division and the hotel teams all working together in a great cross-campus collaboration for almost two years with beautiful results."

According to Van der Reijden, the hotel has teamed with the university's interior design program on interior renovations for years. Not only does this allow for beautiful new venues on campus, he said, but it provides practical application for students in interior design to take what they learn in the classroom and put it to work on a job.

For the pavilion project, interior design students worked with a professional designer to submit potential designs for the space. There were so many great ideas in the submissions, said Van der Reijden, that aspects of five students' designs were used in the final renovation.

Specifically, Katherine Burkholder, a graduate of Auburn's interior design program, served as a lead designer on the project through CMH Architects, Inc. in Birmingham.

"The opportunity that the College of Agriculture and The Hotel at Auburn University provided for the interior design students to contribute to a real-life project — and then see their ideas actually come to life — was incredible," said Anna Ruth Gatlin, assistant professor of consumer and design sciences, who worked with the interior design class on the project. "Multi-disciplinary partnerships like these are so important for every major; in the real world, work isn't done in silos."

The renovations have catapulted the pavilion — which has already booked a number of weddings in the coming months — to the top of the list of competitive rental venues in the area, according to Van der Reijden.

The pavilion was originally designed to honor Alabama farmers and their contributions by providing a gathering space for activities and events at the state's largest land-grant institution. The initial build was made possible thanks to funding from Alabama Farmers Federation and Alfa Insurance.

"Thanks to recent renovations, the Alfa pavilion is once again the crown jewel of Ag Heritage Park," said Jimmy Parnell, president of the Alabama Farmers Federation and Alfa Insurance. "It's a modern, open, comfortable venue that will easily flex with the needs of various events. We look forward to seeing others enjoy the newly renovated Alfa pavilion, while remembering the importance of agriculture to Alabama and Auburn University."

For more information or to check availability at the Ag Heritage Park Pavilion, contact the sales department at The Hotel at Auburn University and Dixon Conference Center at 334-321-3177 or by email at agpark@auhcc.com.

By Kristen Bowman

SOURCE: <http://blog-agriculture.auburn.edu/theseason/renovated-ag-heritage-park-pavilion-reflects-states-agricultural-heritage>

Employee Spotlight

We continue to spotlight an employee each month to put a face with the many services provided by the Department of Agriculture and Industries. We hope you enjoy getting to know more about our excellent employees!



Our Spotlight Employee of the Month for September is: Mitch Roberts

Mitch Roberts has worked for the Department of Agriculture and Industries for 18 years and serves as a Consumer Protection Specialist in the Weights and Measures Division.

Roberts conducts field inspections on gasoline pumps at retail sales locations and high-volume sales locations such as gas stations, to ensure consumers that the pump is operating properly. While at these locations, he conducts an octane field analysis to test fuel quality. Depending on the results of the onsite octane test, he may collect an additional sample to send to the lab for further inspection.

He inspects large capacity scales that measure from 50,000-400,000 pounds at locations such as stockyards, truck stops and forest product processing facilities. He also inspects low capacity scales that measure from 0-50,000 pounds such as grocery store scales at the checkout and precious metal scales at jewelry stores and pawn shops.

His inspection territory includes most of North Alabama. His favorite part of his job is that it provides him with the opportunity to meet new people from a variety of backgrounds. He has also served in the military for 33 years in the U.S. Army, Army Reserves and Army National Guard.

Roberts and his wife, Daphne have been married for 39 years. They have two grown children, Russell and Hana. Most importantly, they have seven fantastic grandchildren.

National Weekly Hog Report

The following are the national statistics of hog sales, as compiled by the USDA on Friday, August 14. Early weaned pigs \$1 per head higher. All feeder pigs are \$2 per head higher. Demand moderate for moderate offerings. Receipts include 44% formulated prices. All prices quoted on per head basis with an estimated lean value of 50-54%.

Receipts this Week: 104,721 Last Week: 94,435 Last Year: 122,267

Information below (l-r) is: Lot Size, Head, Formula Range, Formula Wtd Avg., Head, Cash Range and Cash Wtd Avg.

Early Weaned Pigs 10-12 Pounds Basis:

600 or less				1,510	11.00-16.00	13.43
600 - 1,200				6,100	1.00-20.00	12.25
1,200 or more	45,978	16.39-42.63	31.53	45,983	3.00-20.00	14.22
Total Composite	45,978	16.39-42.63	31.53	53,593	1.00-20.00	13.97

Feeder Pigs 40 Pounds Basis:

600 or less				1,850	16.00-18.00	17.30
600 - 1,200				3,300	17.50-19.00	18.45
Total Composite				5,150	16.00-19.00	18.04

Total Composite Weighted Average Receipts and Price (Formula and Cash): All Early Weaned Pigs: 99,571 at 22.08; All 40 lbs. Feeder Pigs: 5,150 at 18.04.



NOTE: Prices are quoted on a per head basis delivered to the buyers farm. Prices include freight and fees on a farm to farm basis.

Source: USDA Market News Service, Des Moines, IA. 24 Hour recorded market information 515-284-4830. www.ams.usda.gov/market-news/swine-reports.

Photo courtesy of USDA.gov.

Product Spotlight

Alabama is rich in home-grown products. We're proud of Sweet Grown Alabama products!



Eng Land Honey

by Laura Jean McCurdy
ADAJ Communications
Specialist



What do you do when you receive a beehive for a Christmas present? You start your own bee farm, of course! Ever since that Christmas in 2017, Amy

Eng and her husband, Jeff Eng, established Eng Land Honey in Pike Road, Ala. Both were excited about this new adventure that would benefit the land, support the local bee population, and give them more time in nature.

Amy and Jeff were fortunate when first starting out to find fellowship and mentorship with other beekeepers, which lead to a successful first season. They now participate in online education (classes) through Auburn University, AL Extension Programs, and reach out to other beekeepers. Eng Land now maintains multiple types of hives, and are always looking for new techniques, equipment, and any way to better life for bees.

Eng Land's 100 percent raw honey is bottled in 8-ounce and 12-ounce glass jars. Once the honey is extracted from a hive, it is poured through a coarse sieve to remove any large particles, and then bottled ... that's it! They keep the process simple so the raw honey will contain natural vitamins, enzymes, antioxidants, and local pollen for their beneficial properties.

Eng Land's homemade beeswax candles are great for those with asthma, allergies, and sensitivities. The candles come in Natural Scents (natural, light, and nutty-honey scent), Honey Citrus Sage, Honeysuckle, Fresh Lemongrass, and Honeyed Lavender. They also sell honey straws, which can be enjoyed on the go. Other products that Eng Land markets are, ceramic honey pots, glass honey pots, wooden honey dippers, bee tea towels and gift baskets.



Amy and Jeff's favorite product is their honey! "The sweet, raw honey from the hive is perfect in tea, over fresh berries, and on a biscuit," said Amy. "I love to cook and bake, so I am always finding a way to incorporate honey into recipes."

For more information, visit their website at <https://englandhoney.net/>. They are also on Facebook at Eng Land Honey and on Instagram @eng_land_honey.



Southern Cuisine

Chef David Spooner

Retired Chef
Volunteer Fireman, Lowndesboro V.F.D.
St. Paul's Episcopal Church, Lowndesboro
Board of Registrars, Lowndes County

It's National Snack Month!

There is a lot to celebrate this month with agriculture! From honey to chickens to snacks to farm safety ...

Check out previous recipes from Chef Spooner for other tasty ideas to compliment this month's great party snack.

As fall approaches, so many look forward to football and tailgating ... now with the Coronavirus pandemic and the uncertainty of how this football season is going to play out, it tends to dampen the possibilities of tailgating and gatherings on Saturdays and Sundays.

However, football or not, farmers are continuing to produce healthy, delicious products. Enjoy the best local farms have to offer and include some of those items in your favorite recipes while whipping up something else delicious from Chef Spooner!

Zucchini Nugget Snacks

INGREDIENTS:

- 1 lb zucchini
- 1/4 teaspoon salt

Binder to keep

everything together:

- 3/4 cup finely sliced green onions
- 2 garlic cloves minced
- 1 cup Panko bread crumbs
- 2 lightly beaten eggs
- 5 oz crumbled feta cheese
- 1/2 cup finely graded parmesan cheese
- 1 Tbsp oregano
- 1/2 cup plain flour
- Spray cooking oil

INSTRUCTIONS:

1. Pre-heat oven to 350 degrees.
2. Grate zucchini into a mesh strainer over a bowl. Sprinkle with salt, stir to evenly distribute the salt. Let the zucchini sit for 20 minutes. This will help expel the water from the zucchini. After 20 minutes, squeeze as much liquid out of the zucchini as you can.
3. Put zucchini and binder ingredients in a large bowl and mix well.
4. Spray a baking pan with cooking spray. Using a small one tablespoon melonballer or small scoop, place a measure of batter onto the palm of your hand and then shape into a nugget or tot.
5. They will not spread so you can place close together. Before placing in the oven spray the nuggets.
6. Bake for 20 minutes or until golden brown. There will be crunchy crust on the outside, somewhat creamy middle.
7. Serve with any dressing, topping or sauce you like. A squeeze of a fresh lemon and even a dollop of ketchup goes well with this snack.

Make a lot, they will go quick.



Photo by Chef Spooner

Be sure to support our local farms throughout the year, especially during COVID-19. They are the backbone of our communities.

“Unsolicited Seed Packages from China Delivered to Alabama Residents”

By Laura Jean McCurdy, ADAI Communications Specialist

Just when you thought the year 2020 could not possibly become any stranger, it did. In late July, Alabama residents began receiving “unsolicited” China origin seeds delivered to their homes through the United States Postal Service (USPS). The mysterious packages were marked “China Post” and “untracked” and often mislabeled as “jewelry” or various forms of jewelry products.

Residents from several other states including Arizona, Delaware, Kansas, Kentucky, Louisiana, Ohio, Tennessee, Utah, Virginia, Washington State and more reported receiving suspicious packages of seeds. This practice is known as agricultural smuggling, meaning the packet of products can potentially introduce foreign plant diseases or pests that reduce agricultural productivity or require expensive eradication. (The Economics of Agriculture and Wildlife Smuggling, USDA)

The intent behind the unsolicited seed deliveries is still unknown. No evidence indicated this was something other than a “brushing scam” where people receive unrequested items from a seller who then posts false customer reviews to boost sales.

The Alabama Department of Agriculture and Industries (ADAI) established an online reporting system for Alabama residents who received suspicious seeds they did not order. Through the reporting system, ADAI Inspectors collected packages from recipients. Citizens can now drop off seed packages at their local county Extension office. Packages have been reported in 56 counties in Alabama with the top counties being Baldwin, Jefferson, Mobile, Montgomery and Madison.

ADAI tested the seed contents for unknown compounds, noxious weed seed, and invasive species. This testing determined if they contained anything that could negatively impact U.S. agriculture or the environment. Seeds identified so far have been 50% flower seeds, 41% vegetable seeds and 9% herbs.

Since July, 638 packages of unsolicited seeds were reported. A large representative regulatory number of samples were tested and no harmful components have been detected.

“We continue to urge all residents to be on the lookout for similar packages. These seeds could have been or still be invasive or be harmful to livestock,” said Commissioner of Agriculture and Industries Rick Pate.



Please follow these instructions if you receive unsolicited seed packages:

1. Report at www.agi.alabama.gov/ reportseeds or call 334-240-7304.
2. DO NOT open the seed packets.
3. DO NOT plant the seeds.
4. DO NOT discard them.
5. Keep packaging, including the mailing label.
6. Take packages to the Extension office in your county. A list of county offices is available at www.aces.edu/directory

Advertising Opportunities Alabama Farmers and Consumers' Bulletin

Ad Size*	3 Months	6 Months	12 Months
Full Page	\$1,350	\$1,175	\$975
Half Page	\$750	\$650	\$575
Third Page	\$425	\$375	\$325
Quarter Page	\$325	\$275	\$225

* Size per ad month; NOTE: PREMIUM spaces (Inside Front Cover, Center Page, Inside Back Cover) are available first-come, first-serve for an additional charge. Please inquire about other available packages, including Special Events.



Contact the Alabama Gazette at 334-356-6700 or
info@ALFarmBulletin.com for more information!

MEDLOCK FARM

4 HOUSE BREEDER FARM IN COFFEE COUNTY, AL

Medlock Farm is a four house Breeder Hen Farm located near Enterprise, AL in Coffee County. This farm has two houses built in 2010 that are 40x450 and two that were built in 2014 that are 40x500. The farm capacity is typically 43,200 hens. This farm grows for Pilgrims and is located very close to the hatchery. Historical gross annual income has ranged from \$300,000 to \$315,000. The farm has 18+/- acres with a home site on the farm.

Medlock Farms offers a great opportunity for a buyer to walk into a well maintained and manicured farm. The farm has great income and as of April 2020 there are no updates required on the farm.

ROBERT KING

844-855-0680
robking@landgroup.com

RANDALL UPCHURCH

256-239-5379
upchurch.farm@eml.com

Southeastern
LAND GROUP

Robert King and Randall Upchurch are licensed farm agents with Southeastern Land Group, Realty South, LLC, a poultry farm marketing platform.

POULTRYSOUTH.COM

© Copyright 2017-2020 PoultrySouth, LLC. All rights reserved.

Subscribe to or Renew (subscription cost is S&H) 09/11

ALABAMA

Farmers and Consumers' Bulletin

Fill out the form below & return it with your check, payable to:
Alabama Farmers and Consumers' Bulletin (AFCB):
P.O. Box 3336 / Montgomery, AL 36109-0336

<input type="checkbox"/> In-State Residents \$18 for 1 year (12 issues)	<input type="checkbox"/> Out-of-State Residents \$22 for 1 year (12 issues)
<input type="checkbox"/> NEW Subscription	<input type="checkbox"/> Renewal
<input type="checkbox"/> Address Change	

Name: _____

Address: _____

City: _____ St: _____ Zip: _____

Home No: _____ Cell No: _____

E-mail: _____ County: _____

Subscription number (if known): _____

**Pay online at: www.ALFarmBulletin.com or
CALL 334-398-7162 to pay by phone.***

* \$1 fee added to online & phone payments.
All major credit & debit cards accepted.

**SHOWING UP FOR WORK
BEFORE THE SUN DOES.
SOME DON'T GET IT, BUT WE DO.**

Rise and shine with a farming loan from Alabama Ag Credit. Since 1916, we've helped farmers like you finance improvements and upgrades for everything from supplies to tractors to tools that get the job done. Whether you're starting or expanding your ag operation, we offer long-term or short-term credit options. Call us today to learn about our competitive rates and how our relationship lending can make your farm a success. ✓

ALABAMA
AG CREDIT
LAND & FARM LENDERS

NOTICE OF EVENTS

ACES Calendar Update – Most Extension events will be offered exclusively online through October 10 due to Coronavirus concerns. In limited cases, certain events might be offered in-person following health and safety recommendations from the University and public health officials. Contact your County Extension office about specific events OR Check the ACES Calendar online, for continuous updates or to find out which online events are being held. www.aces.edu/events

Sept. 12 & 26 – Central Alabama Goat & Poultry Auction at noon: 1403 Kincheon Road, Clanton. Additional livestock, poultry, etc. welcome! For more information, call Jada (205) 258-8307 or Kathy (205) 351-2039

TAKE YOUR 2020 CENSUS



Pay Online or Call 334/398-7261



www.ALFarmBulletin.com

Subscribe to or renew the Bulletin online via PayPal or a debit/credit card; or email info@ALFarmBulletin.com to be invoiced.



Preserving Farm-Fresh Eggs by Freezing

Those who have chickens may find the laying hens in the back yard provide more eggs than a family can use before going bad. When the bounty is overflowing, preserve farm-fresh eggs by freezing.

Freeze Mixed, Whole Eggs

According to Alabama Cooperative Extension System food safety and quality agent, Dani Reams, the key to preserving eggs is to freeze mixed, whole eggs. First, break each

whole egg into a clean container. Then, examine the egg to make sure it is in good condition and free of shell fragments.

“Cracking one egg at a time into a small container, like a jelly jar, makes it easier to examine,” Reams said.

After examination, pour the eggs together into a large container. Thoroughly mix the eggs and yolks, while trying to avoid incorporating air into the mixture. The National Center for Home Food Preservation suggests adding ½ teaspoon of salt per cup, 1 ½ tablespoons of sugar per cup or 1 ½ tablespoons of corn syrup per cup to help improve the texture of the yolks in the final product.

“If you choose to include one of the additions, make sure to consider the future use of the egg,” Reams said. “For example, I use salt when I put up eggs for scrambled eggs.”

Next, pour the mixed eggs into a freezer bag. Make sure to label the freezer bag with the date, name and number of eggs before freezing. When ready to use the eggs, thaw the frozen eggs the night before use in the refrigerator.

Freezing Options

Reams said it is possible to freeze yolks and egg whites separately.

“If frozen alone, the egg whites should be stirred gently and strained through a sieve,” she said. “Additives are not necessary to freeze the egg whites.”

Mix yolks with 1½ tablespoons of sugar, 1½ tablespoons of corn syrup or ½ teaspoon of salt per cup of egg yolk to prevent graininess. This is

equivalent to the mixture for the whole eggs.

For the option to thaw only one or two eggs at a time, Reams said a good alternative to a freezer bag is to use an ice tray.

“If you chose to use the ice tray, you should figure out the capacity of your mold before freezing,” Reams said. “Each cube in my ice mold holds about 1½ tablespoons of egg mixture.”

If there are issues removing the frozen egg from the ice tray, run warm water over the bottom of the tray to loosen the frozen pieces. However, be aware that some of the outer surface will also melt in the process.

To keep the pieces from refreezing together, place cubes individually on a baking sheet with wax or parchment paper. Then, return the cubes to the freezer until the melted outer layer is entirely frozen. Afterwards, place the pieces in a freezer bag for storage. Make sure to thaw the egg in the refrigerator prior to use, and prepare the eggs in thoroughly-cooked dishes.

More Information

To learn more about freezing farm-fresh eggs, visit the Alabama Extension website www.aces.edu and view our webinar on preserving the bounty by freezing: <https://www.aces.edu/blog/topics/home-food-preservation/eggs-preserving-the-bounty-by-freezing/>. Also, visit the National Center for Home Food Preservation for additional information on egg preservation: <https://nchfp.uga.edu/how/freeze/eggs.html>.



Courtesy of AndreaKratzenberg, FreeImages.com

Source: <https://www.aces.edu/blog/topics/food-safety/preserving-farm-fresh-eggs-by-freezing/>

Auburn Entomologist Receives Grant for Anti-Mosquito Material

John Beckmann, assistant professor in the College of Agriculture's Department of Entomology and Plant Pathology, has been awarded \$868,145 by the state of Alabama to develop a lightweight material that blocks mosquito bites while retaining coolness in hot weather.

Beckmann was one of only three Auburn University professors whose research projects received a combined \$1.31 million award through a new program administered by the Alabama Department of Economic and Community Affairs, or ADECA. The state-funded program was created in 2019 under the Alabama Innovation Act.

"This is a very humbling experience, and I am honored to be considered," Beckmann said. "I'm kind of shocked. Honestly, a part of me still thinks this was a crackpot idea, and the other part of me thinks this is the best idea I've ever had in my life.

"People have vouched for me over my career, and I feel proud to pay those people back. But mostly, I have just sheer awe and hope for the future of the project. I am honored and hopeful to give back to the community that took a gamble on me."

Describing his research project in simple terms, Beckmann said to think, "Under Armour that blocks mosquito bites."

"Normal clothes don't block mosquito bites," Beckmann said. "When someone says, 'Wear long sleeves,' that actually doesn't protect you. We found a textile that blocks mosquito bites and is relatively comfortable.

"The issue is that it is not supremely comfortable. So this project is taking what works and making it comfortable in heat, while hopefully retaining its ability to block bites."

Beckmann's project began when he was searching for applied research that would be useful specifically for the state of Alabama.

He created an ideas competition along with the three students in his lab, promising to pay \$100 to anyone who had the best idea according to three criteria: It had to be a quickly testable idea; it had to have the ability to generate money; and it had to be useful for Alabama.

"I generated my ideas by walking around in the backyard in circles and combining the word 'bug' with secondary words," Beckmann said. "This is a creativity trick to generate new veins of thought. I thought, 'clothes to block bug bites!' Then my lab and I got together, and we voted on the best idea. My idea won, so I got to keep my \$100."



In vetting the idea, Beckmann said he remembered a time when he went camping in northern Minnesota.

"I went to the store and bought a popular-brand long-sleeved shirt, thinking it would block me from sunburn and insects," he said. "When I got there, I got eaten alive by deer flies that have razor mouthpieces that slash your skin. They slashed right through the shirt. I remember how painful that trip was — fishing on the lakes and being eaten alive.

"Recalling this experience instantly made me realize how valid this idea was. If I wanted

something like this, everyone else would as well. That's the Steve Jobs ethos."

Beckmann and his students tested clothes that claim to block bug bites by covering their arms with the clothing and placing them in a cage full of mosquitos.

"It turns out there aren't any clothes that actually work," he said. "Even the companies that advertise as such literally do not work. The only way to block them is to wear multiple layers or thick clothing, which is impossible in Alabama."

Beckmann spent a year generating significant preliminary data, collaborating with a roboticist from Carnegie Mellon, Jim McCann, who programs knitting robots. This resulted in a knit that will block mosquito bites. Beckmann then contacted Troy Brady from the Auburn University Office of Innovation Advancement and Commercialization and was encouraged to apply for the ADECA grant.

"The unique thing about this grant was that it is for research that has the potential to improve Alabama's economy," he said. "So my project was a perfect fit to what they wanted. The grant is intended for two years, but we're hopeful it can be extended."

Beckmann — who has degrees in art and physiology from the University of Minnesota, in addition to a doctorate in entomology — has focused his research exclusively on mosquito sterilization systems, though now it is expanding.

In addition to teaching three courses at Auburn, Beckmann also is a continuing education undergraduate student in computer science.

Source: <http://blog-agriculture.auburn.edu/theseason/auburn-entomologist-receives-grant-for-anti-mosquito-material>

By Paul Hollis

USDA Funds Biosystems Professor's Alternative use for Farm Wastewater



Brendan Higgins is doing his part to make sure nothing in this world goes to waste. Not even waste.

The USDA's National Institute of Food and Agriculture recently funded the assistant professor of biosystems engineering's four-year project aimed at developing a three-step process that will transform nutrients found in dairy and swine industry manure wastewater into protein-rich fish feed.

The total value of the project, titled "Development of a bacterial-algal-zooplankton process for conversion of agricultural waste into aquaculture feed," is \$434,659.

"I've been working on this research topic in one form or another since spring of 2017," Higgins said, "so it feels great to get external funding to really grow this project."

And he does mean grow.

"The first step is to grow a mixture of bacteria on the manure wastewater, which is essential because it removes chemical inhibitors found in the water that harm algae growth," Higgins said. "We then grow algae on the water and these organisms use photosynthesis to convert the nutrient pollutants in the water into protein. We then feed the algae to Daphnia zooplankton."

Daphnia are well-known in biology as indicators of aquatic toxicity.

"We are using special strains of Daphnia that grow very well on our wastewater-grown algae," he said. "In fact, we have found that they grow better on our wastewater algae than they do on their normal algae feed, and Daphnia are valuable as a protein-rich fish feed."

But Higgins' research isn't just good news for fish. It's also good news for the environment.

"The U.S. dairy and swine industries produce huge amounts of liquid manure and they usually store it in large open pits or lagoons," Higgins said. "The storage lagoons smell awesome, of course, and nearby communities complain about them all the time. They're also a big problem when hurricanes hit because the lagoons overflow and spill into rivers and creeks and ultimately flow into the ocean.

"It is a huge public health and environmental problem and our system provides a possible solution."

Two professors within the Auburn University College of Agriculture — Alan Wilson, a professor in the School of Fisheries, Aquaculture and Aquatic Sciences, and Rishi Prasad, assistant professor in the Department of Crop, Soil and Environmental Sciences — are co-PIs on the project.

Source: <http://blog-agriculture.auburn.edu/theseason/usda-funds-biosystems-professors-alternative-use-for-farm-wastewater>

CLASSIFIEDS

Subscribers'

AQUACULTURE



Courtesy: ADAI

Channel Catfish \$50 hd/up; Bream \$30 hd/up; Bass \$1.25 ea/up; Grass Carp \$10/ea. Lane Pettit 205/429-3415, 205-446-8900 (Blount)

Floating fish baskets, 4'x4'x4', \$100/ea; fiberglass fish tank 40'x12'x4', \$6,000. 205/477-8446 (Tuscaloosa)

CATTLE

All livestock listings must be from bonafide livestock farmers. Notices from livestock dealers, order buyers or persons selling on commission cannot be accepted.

CATTLE SALES

Cattle 18 months and older must be officially identified at change of ownership. For more information about obtaining official tags, contact 334-240-7253. Animals sold out-of-state must meet animal health requirements of the state of destination.

Reg. Hereford bulls, good bloodlines & EPDs, NW AL, \$1,500/up. 256/760-1220 or 256/740-9372 (Lauderdale)

Reg. Beefmaster bulls, polled, black, \$1,500/up. Larry Bowen 1030 Co. Rd. 470, Woodland 36280 770/826-2512 (Randolph)

Reg. Limousin bull, exc. EPDs, red in color, 23 mos., \$2,600. Tracy Campbell 8109 Glendale Rd., Trussville 35173 205/655-7682 (Jefferson)

(10) black Angus/Limousin cross, 3 yo, w/2nd calf bred to black Limousin bull, very gentle, \$1,100/ea. 1224 Co Hwy 98, Hamilton 35570 205/412-0062 (Marion)

Reg. Brangus bulls, various ages, good EPDs, very gentle, \$1,600/up. Randy Cline 3665 Midway Rd., Thomasville 36784 205/393-4470 (Clarke)

Reg. Brangus heifers, various ages, good EPDs, very gentle, \$1,000/up. Randy Cline 3665 Midway Rd., Thomasville 36784 205/393-4470 (Clarke)

(10) Reg. Charolais replacement heifers, 6-8 mos., several show heifer prospects, polled, gentle, top bloodlines, \$1,200/ea. www.frankellis.com. Frank Ellis 250 Ellis Rd., Letohatchee 36047 334/315-8927, 334/227-4856 (Lowndes)

Purebred Brangus bulls, 15-25 mos., \$1,500/up. Keith Mahan 1237 Pleasant Hill Rd., Guntersville 35976 256/738-4437 (Marshall)

Qty, reg. Charolais bulls, 19-23 mos., polled, gentle, thick, outstanding EPDs, top bloodlines; add pounds & profit to your next calf crop, \$3,500-\$5,000. www.frankellis.com. Frank Ellis 250 Ellis Rd., Letohatchee 36047 334/315-8927, 334/227-4856 (Lowndes)

Red & black Angus cows bred to polled Hereford, vet checked, \$1,250/ea; Reg Hereford bull, 7 yo, \$1,850. Barry Fernambucq, Verbena 36091 205/755-9022, 205/688-3269 (Chilton)

(3) Jersey nurse cows & (5) Holstein nurse cows, bred to Brahman bull, \$1,000/ea. Bruce Gamble 1530 Randall Wade Rd., Headland 36345 334/790-5077 (Houston)

Reg. Angus bulls: 20 mos., direct sons of Hickock, Firestorm, Yon Full Force; LBW, BSE, parentage confirmed by Angus Genetics, \$2,250/ea. George Gibbins 426 Old Choccolocco Rd., Anniston 256/239-4568 (Calhoun)

Reg. Angus cows 2-8 yo w/calves at side, \$1,400/up. George Gibbins 426 Old Choccolocco Rd., Anniston 256/239-4568 (Calhoun)

Commercial Angus steers, weaning age, 3 avail., \$400-600/ea. Gary Goggins 205/620-4867 (Shelby)

Commercial grade Angus cows, \$800/ea. Gary Goggins 205/620-4867 (Shelby)

Reg. black Angus bulls, lg selection, 2 & 3 yos, birth & weaning weights avail., semen tested, ready to work, \$2,000/up. Chip Harrigan 1361 Asbury Rd., Grove Hill 36451 251/275-6657 (Clarke)

Elite selection Reg. Simmental Sim-Angus bulls, ET/AI, yearlings, black, polled, hand-fed, calving ease, high growth, multi-year bull test winner, \$2,500/ea. cchicksmd@comcast.net, Chester Hicks 206 Forrestine Cir., Gadsden 35901 256/490-1919 (Etowah)

(14) reg. Brangus heifers, just weaned, 7-way Blackleg, dewormed, given Bovi-Shield Gold under vet's directions, most sired by Three D son. \$1,300/ea. Hudson Hines 24100 Hwy 21 N, Beatrice 36425 251/564-1457 (Monroe)

Weaned Brangus bulls, 7-way Blackleg, dewormed, given Bovi-Shield Gold under vet's directions, sired by Three D son, get while young & let them get used to your farm. \$1,500/ea/up. Hudson Hines 24100 Hwy 21 N, Beatrice 36425 251/564-1457 (Monroe)

Reg. Limousin bulls, red & black, double polled, gentle, LBW, 15 to 27 mos., \$1,650-\$1,850/ea. Don Jones 15246 Hwy 110, Fitzpatrick 36029 334/279-1023, 334/207-7749 (Bullock)

Reg. Limousin heifers, red & black, double polled, gentle, LBW, 13 to 18 mos., \$850/ea. Don Jones 15246 Hwy 110, Fitzpatrick 36029 334/279-1023, 334/207-7749 (Bullock)

Reg. young Herefords, starting at \$950. Call or text 256/508-4561 (Chilton)

Gelbvieh, Balancer & Gelford heifers, most are black, 7mos/up, shots and wormed. \$800/up. Call or text 256/508-4561 (Chilton)

Gentle, 18 mos. reg. Santa Gertrudis bulls, \$2,200/ea; exc. qty, fertile in heat & humidity, won't stand in your pond. Betty Kelso-Clough 85 Jackson Cove, Somerville 35670 256/566-7878, 256/778-7362 (Morgan)

Reg. Scottish Highland cattle, purebred bloodlines for foundation stock, exc. maternal characteristics, sweet gentle dispositions, AMAZING Beef, great to cross w/your cattle or start your own fold today, \$1,500/up. www.GBAhighlands.com, info@GBAhighlands.com, Tracey 205/432-9531 (Cullman)

Polled Hereford cows & heifers, gentle, fertile, easy keeping, bred to LBW Angus bull, \$1,200/up. mcm1@pellcityvets.com. Ken McMillan 205/405-0068 (Talladega)

46 cows, 27 calves, 2 Brangus bulls, \$49,400. Samuel Noles, Franklin GA 706/675-3965 (Georgia)

(7) black, BWF, polled, Sim-Angus bulls, gentle, hand-fed, 16-31 mos., good bloodlines, ready for service, \$2,200-\$2,400. patpowell.35045@yahoo.com, W.P. Powell 6712 Co. Rd. 24, Clanton 35045 205/755-3786, 205/245-9409 (Chilton)

Herd reduction, several black, polled, young, Sim-Angus cow-calf pairs, good bloodlines, \$1,900/up; several bred heifers, \$1,700-1,800/ea; 2 open heifers, \$1,250/ea. patpowell.35045@yahoo.com, W.P. Powell 6712 Co. Rd. 24, Clanton 35045 205/755-3786, 205/245-9409 (Chilton)

Newborn dairy bull calves, \$100/ea or 2 for \$150. 334/745-2357 (Chambers)

Limousin homozygous black & homozygous polled young bulls & heifers, guarantee black & polled calves, top bloodlines, exc. milking, great disposition, all vaccinations, LBW, free delivery, herd reduction, \$1,250/up; Snead area. 205/456-0468 (Blount)

BBU reg. Beefmaster bulls, polled, red & black colors, \$1,500/up. Carmon Smith 3557 Co. Rd. 24, Crossville 35962 256/571-3777 (DeKalb)

Brangus bull, born 4/22/19, BW 69 lbs, currently weighs 700+, good disposition, w/papers \$1,400; w/out papers \$1,200. Call or text 205/296-6749 (St. Clair)

Commercial Brangus heifers, slick, heat & fescue tolerant, ages 7 mos./up, \$950/up. Call or text 205/296-6749 (St. Clair)

Reg. Brangus bulls 8-18 mos, \$1,000-\$2,000. David Wasden 175 Lum Ln, Monroeville 36460 251/564-4498 (Monroe)

Miniature cows, bull & calves, prices start at \$600. 334/728-2405 (Chambers)

Reg. Angus yearling bulls, 6 to choose from, \$1,300/up, vaccinated, boosted, wormed & bucket fed to be gentle. David J. Whitt 692 Mt. Sinai Rd, Horton 35980 256/878-1602 (Marshall)

(40) Longhorn cows, most w/calves, solid color, short horns, \$700/pr, \$500/cows, discount for all. Charles Lott 139 Co Rd 137, Jack 36346 334/897-6346 (Coffee)

EGG & POULTRY

Black Copper Marans, Jean Wade line, \$30/ea. lgamato@yahoo.com, Leslie Amato 334/284-3846 (Montgomery)

Heritage turkeys, breeding pair, \$150; also 4 mos., \$35/ea. lgamato@yahoo.com, Leslie Amato 334/284-3846 (Montgomery)

Speckled Sussex chicks, June hatch, \$3/ea. Bob Armstrong 4407 Maple Cir, Adamsville 35005 205/790-2986 (Jefferson)

Chickens \$15/up; guinea/chicken eggs \$3-\$3.50/doz. 334/745-2357 (Chambers)

Wanted: Used chicken house metal trusses in southeast Alabama. Kendall Smith call/text 334/406-1838 (Barbour)

Peacocks: 2014-19 hatches, Indian Blue, white & black shouldered, \$125/up. Candi Whitman 706/326-2812 (Lee)

EQUIPMENT

Elevator, 45 ft., dbl chain, 540 PTO, Stan-hoist brand, \$1,500. Billy Barnard 247 Willow Tree Ln, Union Grove 35175 256/558-0812 (Marshall)

BH 27 Bush Hog brand, 7 ft. bushhog, 125 HP gear box, chain guard, used less than 8 hrs, like new, exc. cond., \$3,550. J. Blankenship 334/216-2424 (Marengo)

Kuhn 6-disc mowing machine, 8 ft, used, fair cond., need blades, maybe belts, \$3,800. Judith or Norman Burgett 1603 Catoma Dr. NE, Cullman 35055 256/339-4243 (Cullman)

5 ft dbl disc, 16 blades, great cond., \$350. David Carver 205/613-3737 (Jefferson)

J.F. Stoll's 8-disc hay mower, \$2,000; 6 ft finishing mower, \$500. 205/388-7369 (Walker)

Gehl 1470 round baler, \$4,000. 205/388-7369 (Walker)

486 New Idea hay baler, \$2,000; Vermeer 605 Super J baler, \$4,500. 205/388-7369 (Walker)

750 J.D grain drill, late model w/2 cyl., new parts, good working cond., \$13,500. 256/709-1644 (Cullman)

NEW PHONE LINE! CALL 334-398-7261

Pay by phone for renewals or new subscriptions with a credit or debit card.
Also, call this new number for any other subscription related issues!

EQUIPMENT ... continued

12 ft. Ford wheel disc, \$900; 6 ft finishing mower, \$500. 205/388-7369 (Walker)

6000 J.D Hy-Boy, have 3, (1) parts only, \$500; (2) running & ready to use, \$1,500/ea. 256/709-1644 (Cullman)

5 ft, pull-type, bushhog, \$300; J.D. "R" manure spreader, \$900. Ronald Garner 11395 Co Rd 42, Fackler 35746 256/608-9304 (Jackson)

Excavator buckets, 200-220 size, 24" 4D side cutter=28", very good cond., purchased new, \$2,900; 54" bucket, \$2,500. Mike Griffin 2019 Stockdale Rd, Munford 36268 256/362-3009 (Talladega)

Rome KG cutter blade w/C-Frame, fits D6D Cat., purchased new, good cond., \$9,000; also 2 old root rakes. Mike Griffin 2019 Stockdale Rd, Munford 36268 256/362-3009 (Talladega)

KMC ripper/bedder, like new, 6-row narrow, 4-row wide, \$1,500; 1-row New Idea corn picker, \$2,300. Johnny Griggs 604 Goodway Rd., Frisco City 36445 251/282-6125 (Monroe)

2-Vicon 9 ft 2-inch, pull-type mower conditioners, need repairs, use both to make one usable, use one for parts, both \$1,000. 205/365-1629 (Talladega)

4 ft Big Bee bushhog, good cond., \$300. 334/567-8950 (Elmore)

Maxilator Mag-100 small bale accumulator, 10 bales at time, used very little, \$3,800/OBO. Chancellor (cell) 334/475-0932 (Geneva)

2012 J.D. 348 Baler, super nice, only about 4,000 bales on it, Multi Luber, always shed kept. \$17,000 OBO. Chancellor (cell) 334/475-0932 (Geneva)

2014 Swisher 44 in brush hog, model RTB14544, only has 15 hrs use, 14.5 hp Briggs & Stratton, new tires, new Napa truck battery, no rust, exc. cond. Ready to work, \$1,100. Marvin Myer III, Jackson 251/769-8323 (Clarke)

Kuhn 283 disc mower, 9 ft, \$8,500; 17 ft, 5202 hyd tedder, \$5,500; J.D. 8-wheel rake, \$2,500; all exc shape. Carrollton, GA 678/873-6751 (Georgia)

I.H. 5100 grain drill, 7.5 spacing, dbl. coulters, packer wheels, \$4,000; I.H. Super A restored cultivators, good cond., \$2,500. Sanford Peoples 100 Peoples Rd, Wetumpka 36092 334/391-4693 (Elmore)

Wanted: small hay tedder, reasonably priced, good cond. Jim 205/914-2895 (Jefferson)

124 M.F. hay baler, \$500; N.H. round baler, \$2,000; 463 N.H. hay mower, \$1,000. 160 Richs Ln, Jacksonville 36265 256/239-2005 (Calhoun)

J.D. 1209 mower conditioner, really good cond., \$2,000. Greenville 36037 334/437-1952 (Butler)

Vicon 240 hay cutter, \$2,000. Greenville 36037 334/437-1952 (Butler)

20 ft. flex-wing Rhino cutter, good cond., shed kept, \$4,500. Edward Sistrunk 334/727-1919 (Macon)

Kuhn GMD hay mower, \$5,000; 10 ft. Int'l disc, \$500; Tarzan harrow, \$400. Eddie Roy 517 Summerford Rd., Danville 35619 256/462-3263 (Morgan)

1872 Landpride 6 ft. brush cutter, good cond., \$1,100; Priefert litter blade 7.5 ft., like new \$1,700. Marvin Vick 5090 Co Hwy 39, Oneonta 35121 205/589-6416 (Blount)

Kuhn hay cutter, 10 ft, good cond., \$5,000 FIRM. Alvin Wilson 10071 Woodie Ln, Irvington 36544 251/604-7970 (Mobile)

2017 Vermeer 6650 Rancher hay baler, monitor, bale ramps, net & twine, gathering wheels, exc. cond., 4,800 bales, \$25,000. 334/341-1626 (Marengo)

J.D. 915F grain platform, late model, new blade, guards, fingers, poly dividers, f/a reel, good poly on bottom, \$10,000. 256/708-3212 (Cullman)

J.D. 535 hay baler, good cond., hyd. twine tie, field ready, no rust, shed kept, \$5,000. Charles Lott 334/406-7200 (Coffee)

J.D. 535 baler, great cond., flotation tires, bale kicker, twine wrap, barn kept, \$4,800. Steve Vasko 251/238-1299 (Escambia)

Wanted: manure spreader trailer in good cond. 251/943-5845 (Baldwin)

FARMS FOR SALE

160 ac. timber land, near Crossville in E. Lamar Cnty, lots of deer & turkey, has nice cabin on it, cnty water, \$1,800/ac. 205/712-2558 (Lamar)

180 ac. of cutover in NW Pickens Cnty, great deer hunting, \$900/ac. 205/712-2558 (Lamar)

43.88 ac. near Larkinsville in Jackson Co., road frontage, well, cnty water avail., 1/2 wooded, 1/2 open, block bldng, \$185,000. Paul Pace 18453 AL Hwy 35, Scottsboro 35768 256/599-3463 (Jackson)

FARMS WANTED

Looking to lease dove field within one hour of Birmingham, prefer north. Mike Baker 205/401-6126 (Jefferson)

Land to purchase in Macon Co. or Lee Co. on Co. Rd. 53 or 54/Wire Road, small to medium tract. 205/456-0468.

FARM FRESH PRODUCTS

Freezer Beef – Limousin steers, grass fed, no hormones, no antibiotics, 900-1,200 lbs, \$1.25/lb, live weight, deliv. w/in 30 mi. Lowell Brothers 112 Bohannon Rd, Horton 35980 256/506-3046 (Marshall)

Freezer Beef – Black Angus, Sim-Angus calves, NO hormones, NO antibiotics, grain fed, \$2/lb, live weight, qty calves, ready now! paipowell.35045@yahoo.com, W.P. Powell 6712 Co. Rd. 24, Clanton 35045 205/755-3786, 205/245-9409 (Chilton)

NEW EMAIL ADDRESS! info@ALFarmBulletin.com

Classifieds & Changes due by 15th of each month! / Mail postmarked by 12th.
Call 334-356-6700 by the 15th for renewals or changes.

HAY & FEEDING GRAIN

High qty horse & cattle hay, 4x5 Argentine Bahia, net wrapped, barn stored & outside, delivery avail., \$25-\$50/ea. Alfred Carter 795 Carter Rd, Monroeville, 251/593-2855 (Monroe)

Alfalfa hay, western grown, 3x3x8-ft. & 3x4x8-ft. bales, \$150-\$305; sm. sq. bales, pure & mixed, \$17-\$20; round & sq. grass hay, Bermuda & Bahia, \$6-\$60; mulch, \$5/bale, discount if gotten out of field. Tracy Campbell 8109 Glendale Rd., Trussville 35173 205/655-7682, Jeff 205/296-3463 (Jefferson)

Exc. qual. mixed grass & Bermuda sq. bales, sprayed & fertilizer, \$5/ea/up. Ricky Gibbs 1900 Co Rd 1678, Cullman 35058 256/338-7602 (Cullman)

Good Bahia hay, highly fertilized, in field, loaded on your trailer, \$20ea. 251/846-2164 (Washington)

Rye seed, cleaned tested, 50 lb bags, \$16.50/per bag. Terry Reece 2006 AL Hwy 73, Bryant 35958 256/657-6872 (Jackson)

4x5 rolls, fertilized Argentine Bahia, net-wrapped, 3 rounds, cow hay, \$28/roll, loaded in field; mixed hay cheaper. Jerald Kichler 16336 Co. Rd. 87, Elberta 36530 251/952-8395 (Baldwin)

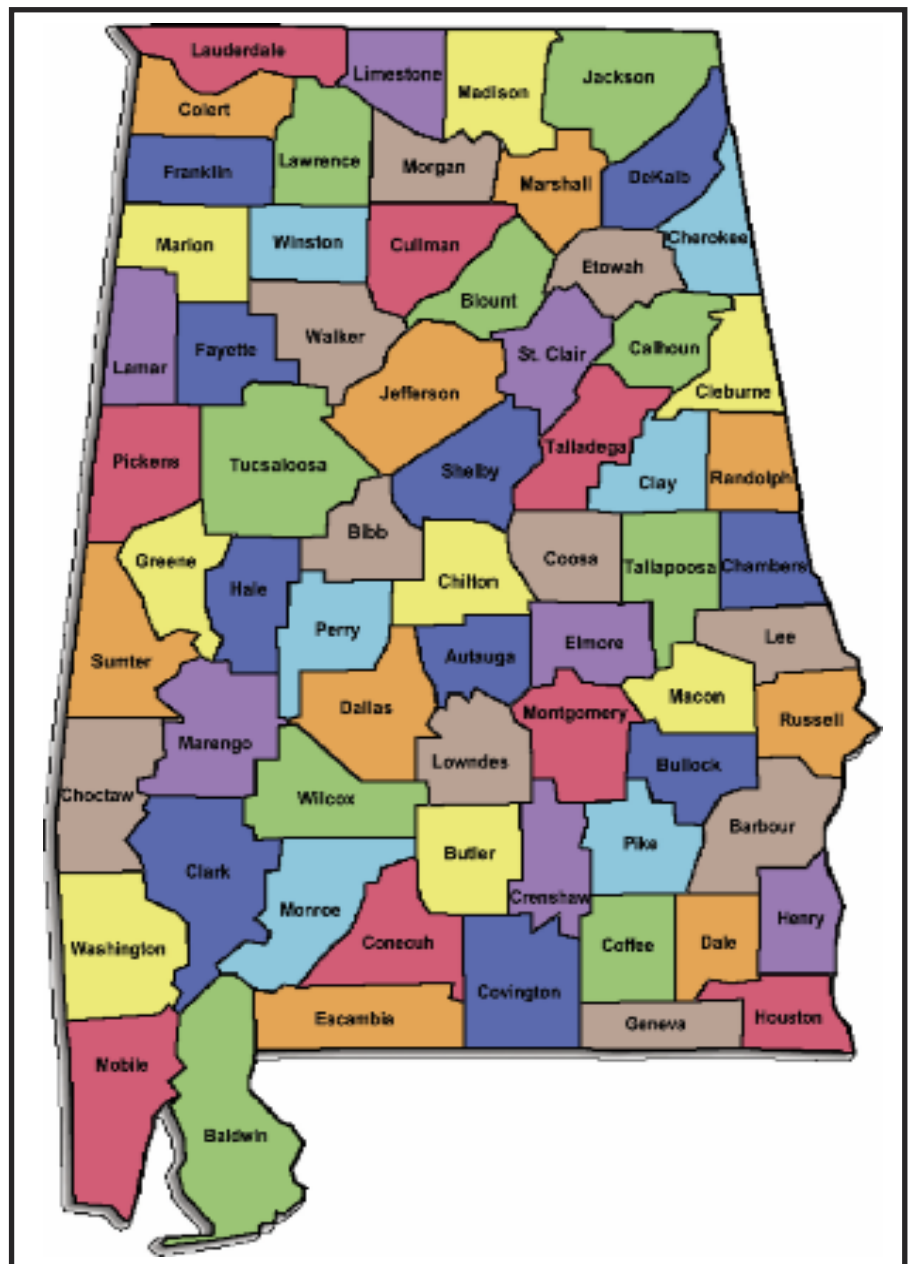
(240) 4x5 straw rolls, \$25/ea; (100) 5x6 straw rolls, \$35/ea. Terry Reece 2006 AL Hwy 73, Bryant 35958 256/657-6872 (Jackson)

4x5 round bales, net wrapped, fescue/orchard grass, soil tested, commercial fertilizer, sprayed, no rain, baled w/J.D. baler, will load, Blount County-Snead area, delivery avail., taking orders for 2020 NOW, \$35/bale. 205/456-0468 (Blount)

Exc. qual. 5x5 rolls of fescue, local delivery avail. for fee, \$35/ea. Bob Stancil 5272 Hwy 43, Spruce Pine 35585 256/460-5657 (Franklin)

Premium Alfalfa sq. bales \$14/ea. Bob Stancil 5272 Hwy 43, Spruce Pine 35585 256/460-5657 (Franklin)

Sq. & round bales horse qty bermuda mix, \$5/ea or \$5.50 pick up in field; Good qty mixed grass, \$5/ea or \$4.50 pick up in field; Fertilized, sprayed rolls \$30 & \$35 by qty. J.C. Trice 205/217-9961 (Chilton)



FREE CLASSIFIEDS! Subscribers Only!

Alabama Farmers & Consumers' Bulletin
Phone: 334/356-6700 (20 word limit) Fax: 334/240-7169
Email: info@ALFarmBulletin.com

Category: _____

Include Price or Range for Each Item Listed in Classifieds.
Fax/Email deadline is the 15th and Regular Mail must be postmarked by the 12th.

Name: _____ Email: _____
 Address: _____
 City: _____ State: _____ Zip: _____
 County: _____ Phone: (____) _____

Place a check mark in front of the information to be printed (see guidelines)

_____ Name _____ Address _____ Telephone _____ Email _____

Run Classified: _____ Once _____ 3 months _____ Until I notify to stop

NEW! Add Pic: _____ 3 months _____ 6 months _____ Check Enclsd. _____ Paid Online

Mail to: **Alabama Farmers & Consumers' Bulletin**
Notice Dept., P.O. Box 3336, Montgomery, AL 36109-0336
Please call 334/356-6700 and leave a detailed message for questions or changes.

Guidelines for Submitting Classifieds

Following are the guidelines for advertising in the classified section of the Alabama Farmers and Consumers' Bulletin. Adherence to these rules will ensure quick processing of ads. All ads that do not meet the following guidelines will not be published. Please email info@ALFarmBulletin.com for a complete list of Classified Guidelines or go online to <http://www.alfarmbulletin.com/Classifieds.html>

- Only those ads which pertain to agricultural or forestry products and to those items employed in the actual growth, harvesting and disposal of such products will be accepted.
- Ads should be typed or printed. Those ads that are not legible will not be published.
- Only paid subscribers are permitted to place classifieds in the Bulletin.
- Prices must be included with all items offered for sale. Price ranges may be used in certain ads; for example, due to age, weight, etc. cattle can be advertised as \$1,200 - \$1,500.

Classifieds in the Bulletin are published on a first-come, first-serve basis. It is to the subscriber's advantage to submit items as soon as possible. The Bulletin does not assume responsibility for transactions resulting from the use of this publication. Misrepresentations will result in the revocation of all privileges. For questions concerning the guidelines, please e-mail info@ALFarmBulletin.com.

HORSES, MULES & DONKEYS



Jerusalem donkeys, small cross on back, very gentle, will walk right up to you in pasture, great protection from dogs & coyotes, \$200/ea; some rare black nose donkeys, \$300/ea. Alton Padgett 8850 Marsh Mtn. Rd., Pinson 35126 205/680-0450 (Jefferson)

Jerusalem donkeys, males, 2 avail., \$100/ea. Gary Goggins 205/620-4867 (Shelby)

Donkeys, \$50/ea. OBO. 205/919-8568 (Jefferson)

LIVESTOCK DOGS



Reg. Border Collie pups out of solid cowdogs, \$500/ea; training services for Border Collies only for cattle or sheep, \$500/mo., plus feed; 60 yrs of hard exp. w/Border Collies. www.valleybordercollies.com, James A. Thomas 334/790-8910 (Geneva)

Border collie pups from working parents, ABCA reg., avail. Aug. 1, \$500/ea. Ricky Gibbs 256/338-7602 (Cullman)

AKC reg. Australian Shepherd pups, have raised Aussies for 25 yrs, super nice, exc. pets & farm dogs, \$600 merles, \$500 tris. kerry55.kw@gmail.com, Kerry Waters, Enterprise 334/714-1093 (Coffee)

MISCELLANEOUS

801 Ford tractor, gas engine, parts, cylinder head, valves, rocker arm, radiator distributor, starter, & more, \$500/all. Thomas Buckner 2578 Co Rd 8, Woodville 35776 256/599-7213 (Jackson)

Case 1070 tractor, only 3,800 hrs, \$4,500. 205/388-7369 (Walker)

460 Farmall tractor, narrow front, \$1,000; 420 J.D. tractor \$1,000; 912 Allis-Chalmers, \$200. Ronald Garner 11395 Co Rd 42, Fackler 35746 256/608-9304 (Jackson)

4630 J.D. tractor, cab, air, heat, Syncro T, new tires, 155 HP, \$10,500. Johnny Griggers 604 Goodway Rd., Frisco City 36445 251/282-6125 (Monroe)

1994 Case I.H. #1666 rotary combine w/17.5 ft #1020 flex head, 4,075 hrs, Cummings diesel, cold air, exc. cond., ready to use, \$20,000. 205/365-1629 (Talladega)

Int'l Harvester tractor, model F-1026-D, hydrostatic, \$2,600 OBO. Nick Hauser, Livingston 205/652-3082 (Sumter)

Wanted: 1085 OR 1135 Massey Ferguson tractor for parts. Jim Jordan 256/354-5673 (Clay)

I.H. #1420 rotary combine w/4 row, #944 corn head, 4,500 hrs, cold air, many new parts, good cond., \$7,500. 205/365-1629 (Talladega)

Wanted: Rims for 7000 Ford Tractor, 4000 Ford or 4610 tractors w/loaders, w/in 125 mi. of Fyffe. Clyde Martin 256/623-3193 (DeKalb)

Caterpillar D-6 dozer, last cable machine (64½), runs great, good undercarriage, 6-way mech. blade, \$3,250. 205/663-2204 (Shelby)

720 J.D. diesel, pony motor start, roll-matic front end, live power, \$5,800. Samuel Noles, Franklin Co. 706/675 3965 (Georgia)

N.H. TD80D tractor, 2008, 4x4, 80 hp, 1,680 hrs, w/Woods loader, needs brake work, \$25,000. 256/749-7765 (Coosa)

886 Int'l tractor, top shape, new paint, starter, tires & battery, new front end loader, \$11,500/total. Mark 334/531-9369 (Montgomery)

Super A Farmall tractor, new rebuilt motor, new clutch, new paint, new tires, full set of cultivators, \$3,250. 96 Old Mink Rd., Altoona 35952 256/572-8722 (Etowah)

Allis-Chalmers G tractor, rebuilt motor, new paint, brakes, clutch, hydraulic lift, \$4,500. 96 Old Mink Rd., Altoona 35952 256/572-8722 (Etowah)

1974 Allis-Chalmers 200 farm tractor, 6-cyl, diesel turbo, 4 hyd. outlets, good shape, \$5,000. Donald Whitley 4465 Hwy 129, Fayette 35555 205/932-1947 (Fayette)

Pequea feed wagon, 25 ft., 46 feed openings, on wheels, top load, \$5,500. Tracy Campbell 8109 Glendale Rd., Trussville 35173 205/655-7682 (Jefferson)

Lumber - cedar & cypress, \$1.25/BF & up; blue pine, \$.60/BF; poplar, \$.75/BF/up, 4x24x12 decking cypress, \$3.00/BF. Wes Brown 251/282-0558 (Conecuh)

J.D. Gator seats (two), brand new, \$175. David Carver 205/674-3641 (Jefferson)

Stillwater paddle wheel, good cond., \$3,100. Randy 205/288-9509 (Shelby)

Wanted: wide front end for WD or WD45 Allis-Chalmers tractor. Billy Barnard 247 Willow Tree Ln, Union Grove 35175 256/558-0812 (Marshall)

Wanted: J.D. 350 crawler loader for parts. Text: 256/404-4820 (Talladega)

Feed bins, 6 tons/up, various sizes & prices, \$800/up. Bill Durham, Summerville GA 30747 706/252-1084 (Georgia)

Propane tanks, 1000 G, \$1,000/ea. Bill Durham, Summerville GA 30747 706/252-1084 (Georgia)

Lg commercial chicken house fans, \$125/ea. Bill Durham, Summerville GA 30747 706/252-1084 (Georgia)

Treated posts, 8ft long, 10-12 in diameter, good cond., ideal for corner/brace posts & corral posts, \$15/ea; Snead area. 205/456-0468 (Blount)

Stop the spread of germs that can make you and others sick!



Wash your hands often



Wear a cloth face cover



Cover your coughs and sneezes



Keep 6 feet of space between you and your friends



cdc.gov/seasonalflu

Alabama Syrup-Maker's Association Preserving Our Southern Heritage

2020 Membership dues waived!

Learn to grow sugar cane. Make a better syrup.

Earl Stokes, Pres, (334) 494-3037;
Thomas Moore, V.P., (334) 806-6769;
Glenn Dickerson, Treas., (334) 790-9235;
Coffee County, Enterprise, AL 36330

MISCELLANEOUS ... continued

Cedar trees, \$50/ea. 205/388-7369 (Walker)

2-rear tractor tires 13.6x36, \$550. Ronald Garner 11395 Co Rd 42, Fackler 35746 256/608-9304 (Jackson)

Used rear tractor tires 28"-50", \$150/up; used rear industrial tires 15"-25", \$150/up. Johnny Griggers 604 Goodway Rd., Frisco City 36445 251/282-6125 (Monroe)

Rough oak cage for large animal, \$50/obo; oak sideboards cage for full-size pickup truck, \$120; cast iron sink for shop, \$35; Betty Kelso-Clough 85 Jackson Cove, Somerville 35670 256/566-7878, 256/778-7362 (Morgan)

Ramps, new metal, 6 ft long, great for riding lawnmower or 4-wheeler, \$125. 205/979-7616 (Jefferson)

9.22 ac. near Clanton, 2 miles to Lake Mitchell, half-open pasture, creek, furn. 2br/1ba trailer, 12x24 metal building, tractor 49 HP, shooting house, lots of deer & turkey, \$77,000. 205/822-8125 (Chilton)

Wood stove, lg Fisher Papabear, very good cond. martinparmer@gmail.com, 706/263-3213 (DeKalb)

Cattle working systems, 7-pc, 180 sweep, \$2,800; 5-pc 90 sweep, \$2,000; manual head catch, \$500; various size hoop gates/sweep gates available, msta, build the system that works for you. 256/390-3940 (Cherokee)

28-piece, heavy-duty, catch pen/funnel/alley, consists of 50' diameter catch pen, 22' funnel w/sweep gate, 33' alley, head catch, \$5,400; ideal for cattle producers w/rented or multiple pastures; see display at 605 Co. Rd. 19, Piedmont 36272 256/390-3940. (Cherokee)

2-bale covered hay feeder, \$1,300; 4-bale, \$2,300; horse hay feeder w/roof, floor & collapsible sides, 1-bale, \$1,600; 2-bale \$2,600; saves hay; see at 605 Co. Rd. 19, Piedmont 36272 256/390-3940. (Cherokee)

Heavy-duty cattle guards fabr. to fit your pasture entrance, standard size is 7' wide x 20' long w/2 1/2" SCH 40 pipe, \$2,100 or w/SCH 80 pipe, \$2,500; can add pasture gates to unit for complete system; see installed at 220 Co. Rd. 19, Piedmont 36272 256/390-3940. (Cherokee)

Extra heavy-duty cattle panels, 11' long x 5' 8" tall & weigh 175 lbs. \$160/ea., several type gates/panels for catch pens, working pens or round pens, all user-friendly & animal safe. Gary Singleton 220 Co. Rd. 19, Piedmont 36272 256/390-3940. (Cherokee)

Premier 4000C Clipping kit, incl. 2 blades, brush, oil & carrying case, used 2x, \$400. drwelborn@charter.net, pls leave message, David Welborn 256/329-2020, (Tallapoosa)

Semen tank, MVE XC 20, holds 600+ straws, refill every 12-20 wks, incl. 80+ straws of semen, email for list, \$1,000. drwelborn@charter.net, pls leave message, David Welborn 256/329-2020, (Tallapoosa)

L & H Cattle Branding Irons, complete set numbers & letters, most never used, few used 2x, incl. liquid N2 tank & storage crates, \$800. drwelborn@charter.net, pls leave message, David Welborn 256/329-2020, (Tallapoosa)

PLANTS, BULBS & SEEDS

Japanese Maple trees, over 150 cultivars/varieties avail., \$5/up. Paul or Glenda Lowe 11265 Hwy. 50, Dadeville 36853 256/896-0105 (Tallapoosa)

SERVICES

Free services or those not provided as primary source of income or business. Read classified guidelines for complete rules.

Problems w/pigeons? Responsible hunters looking for pigeon shooting locations. Mike Baker 205/401-6126 (Jefferson)

SHEEP, GOATS & SWINE

All sheep and some classes of goats offered for sale or exhibition must be individually identified with the official USDA ear tags for the National Scrapie Eradication Program. To obtain official USDA ear tags, contact the USDA Veterinary Services Area Office at 1-866-USDA-TAG

20+ ewes, 11-14 mos., 3/4 dooper, thick, will make good sheep, \$150/up, deal on more than 3. James Branch 205/369-1335 (Shelby)

(6) Boer-cross nannie goats, born March 2020, \$175/ea. No calls after 8 pm. Jimmy Lolies, 4635 Croft Ferry Rd E, Gadsden 35903 256/458-2722 (Etowah)

STRUCTURES & MATERIALS

40x60 pole barn pkg, used material from chicken house, incl. 2x6 wooden trusses, 2x4 lathing, tin, ridge caps, \$2,950. Delv. Avail. Bill Durham, Summerville GA 30747 706/252-1084 (Georgia)

Pole chicken houses, starting at \$15,000. Bill Durham, Summerville GA 30747 706/252-1084 (Georgia)

SYRUP, HONEY & BEES

Used hive bodies & frames, \$60/up; used supers, \$20/up, medium & shallow metal excluders, \$20; screened bottoms, \$20; other items, prices vary. Edward Bornholt 26697 Frank Rd, Elberta 36530 251/986-8153 (Baldwin)

5-frame honey bee nucs hives, pick up now or book for spring delivery, \$165/ea. hoggle@gmail.com, Tom 256/786-0741 (Perry)

Wanted: syrup-making equipment: cane mills, syrup kettles, etc., Earl Stokes, Enterprise 36330 334/494-3037 (Coffee)

TRUCKS & TRAILERS

18 ft trailer w/4 ft dove slide-in ramps, 10-ton, GN, \$3,500. 1224 Co Hwy 98, Hamilton 35570 205/412-0062 (Marion)

16 ft. cattle trailer, BP, \$1,400. 205/388-7369 (Walker)

Center dump grain box, good cond., \$1,200. 256/709-1644 (Cullman)

850 Ford truck, 475 gas engine, 20 ft factory dump, been used on farm & no longer needed, 38K miles, runs good. \$2,000 OBO. Marvin Gunn 251/242-9070 (Washington)

Belshe 9-ton GN, H.D. trailer, 24' x 8' incl. ramp, good tires & floor, \$5,200 OBO. Nick Hauser, Livingston 205/652-3082 (Sumter)

1998 Chevy, Cat. engine, 8-sp tantum, cold air, 20 ft grain dump w/roll tarp, \$17,500. 205/712-0733 (Lamar)

70s David Brown 990 diesel, selectomatic or 'fix "him" up to show,' needs work, \$1,250. W.L. Lawrence 573 Co. Rd. 64, Deatsville 36022 334/462-7842 or 334/462-7842 (Autauga)

34 ft Rolls Rite, 25,000 KD, all metal, good tires, brakes & lights, full set of sliding straps, \$7,000. Charles Lott 139 Co Rd 137 Jack 36346 334/406-7200 (Coffee)

Hefty 5 ft x 10 ft utility trailer, treated wood floor, hvy duty, drive-on tailgate, 15 in tires w/chrome wheels, new cond., garage stored, \$850. Mike Mullin 1207 Dunn Adams Rd, Eclectic 334/580-7356 (Elmore)

1995 Ford Bronco, 5.8 engine, 4x4, camo body (body shop painted), all inside redone, new window motors, tires, steering sector, \$10,500. 256/267-6212 (Talladega)

Silver Star aluminum, gooseneck, 3H slantload, rear tack, weekend package, \$9,900. Samuel Noles, Franklin Co. 706/675-3965 (Georgia)

1997 Volva day cab 425K mi, GN setup, 5th wheel avail. & 2007 Big Tex trailer, GN, 25,900 GVWR, (2) 12,000 lb axles, 25GN24B, \$12,000/both. ferhodes1@gmail.com, F.E. Rhodes 5929 Co Rd 69, Skipperville 36374 334/795-3556 (Dale)

20 ft cattle trailer, \$3,000; 500 BU feed/grain trailer, \$1,500. Eddie Roy 517 Summerford Rd., Danville 35619 256/462-3263 (Morgan)

4x5 utility trailer, wood floor & sideboards, 14 in tires/wheels, good cond., tailgate, \$175; Snead area. 205/456-0468 (Blount)

Manure spreader trailer in good cond. 251/943-5845 (Baldwin)

WANTED

Looking to lease dove field within one hour of Birmingham, prefer north. Mike Baker 205/401-6126 (Jefferson)

Wide front end for WD or WD45 Allis-Chalmers tractor. Billy Barnard 247 Willow Tree Ln, Union Grove 35175 256/558-0812 (Marshall)

J.D. 350 crawler loader for parts. Text 256/404-4820 (Talladega)

Cab w/doors or just doors for 8700 Ford tractor. 205/388-7369 (Walker)

2-rear tractor tires 11.2x36 in good cond. Ronald Garner 11395 Co Rd 42, Fackler 35746 256/608-9304 (Jackson)

Rims for 7000 Ford Tractor, 4000 Ford or 4610 tractors w/loaders, w/in 125 mi. of Fyffe. Clyde Martin 256/623-3193 (DeKalb)

1085 OR 1135 Massey Ferguson tractor for parts. Jim Jordan 256/354-5673 (Clay)

40 ft cotton wagon, prefer 4 axle, location not a problem. 270-350-7141 or 270-853-8593 (KY)

6 ft or less offset hyd. harrow on wheels, frame is important, disc is not. 256/234-5739 (Tallapoosa)

Small hay tedder, reasonably priced, good cond. Jim 205/914-2895 (Jefferson)

Old time apple trees, 334/403-2524 (Pike)

Motor for MF 175 A4-236 or A4-248, call after 5:00. Harold Schoen, 251/942-1422 (Baldwin)

Land to purchase in Macon Co. or Lee Co. on Co. Rd. 53 or 54/Wire Road, small to medium tract. 205/456-0468.

Used chicken house metal trusses in southeast Alabama. Kendall Smith call/text 334/406-1838 (Barbour)

Syrup-making equipment: cane mills, syrup kettles, etc., Earl Stokes, Enterprise 36330 334/494-3037 (Coffee)

Head catch for cattle. Marvin Vick 5090 Co Hwy 39, Oneonta 35121 205/589-6416 (Blount)

TOO LATE TO CLASSIFY

Reg. black Angus bull, 3 yo, calving ease, great for heifers, offspring can be seen on farm, \$1,900. 256/558-4519 (DeKalb)

9950 J.D. 4-row cotton picker, good cond., \$9,000. Jimmy Edmonds 6814 AL Hwy 28 E, Livingston 35470 205/652-9405 (Sumter)

Old mule-drawn equip.: hay sickle; Moore hay rakes, 8 ft, 10 ft & 12 ft; stalk cutters, pull gang disk; middle busters; riding cultivators; \$100-\$125/ea. Lamar Stockman 8103 Co Rd 32, Pine Hill 36769 334/385-2421 (Marengo)

Lawrimore 16 ft HD, trailer brakes on one axle, never used, \$24,000; older, used 16 ft trailer, good cond., \$1,000. Reynolds McLendon 251 Co Rd 27, Prattville 36067 334/361-0185 (Autauga)



PICTURE CLASSIFIEDS

\$5 FOR 3 MONTHS*

FIND THE LINK ONLINE AT:

WWW.ALFARMBULLETIN.COM

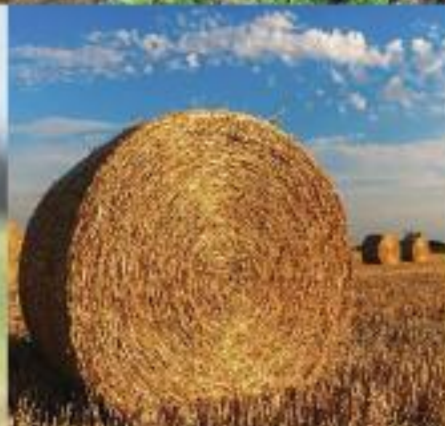
OR CALL 334-398-7261.

* introductory price; subject to change without notice

WE THANK YOU FOR YOUR CONTINUED SUPPORT!

ALABAMA FARMERS COOPERATIVE

From large-scale
farming to
backyard
gardening and
everything in
between...



Your local Co-op
is there for all of
your needs!



Visit www.alafarm.com/locations
to find a store near you!